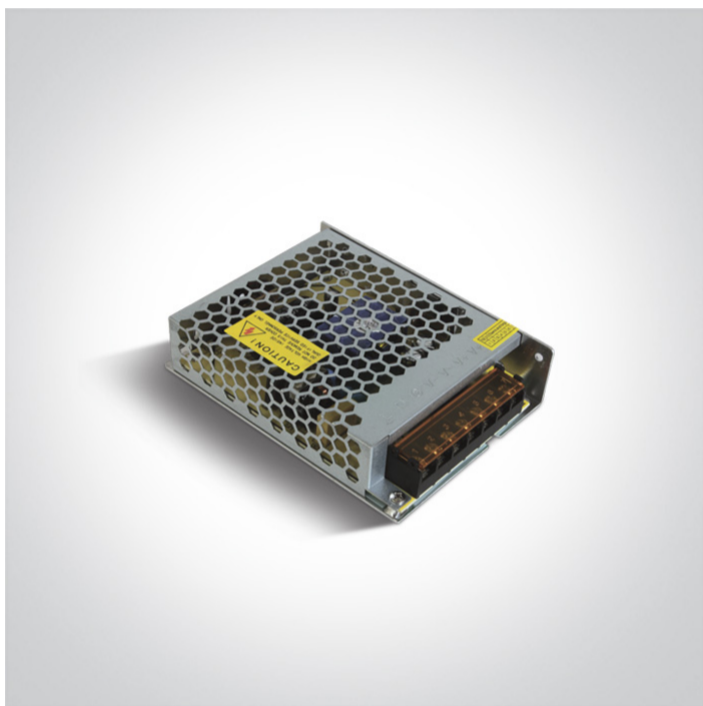


23 LED Drivers>The 24V DC Open Range Constant voltage

89100VN



100W 24V DC constant voltage driver, Open Range IP20.

Complies with standard EN61347-1 and any other specific standards.



Downloads



Dimensions




Physical Specification

Item Group	23 LED Drivers
Family	The 24V DC Open Range Constant voltage
Order Code	89100VN
Material	Metal
Shape	Rectangular
Length	129mm
Width	98mm
Height	30mm
Indoor	Yes

Electrical Characteristics

Gear

Gear Type	Led Driver
Input Voltage	100-240V
50 Hz	Yes
60 Hz	Yes
Power(Watts)	100W
Power Factor	0,95
Constant Voltage	Yes
24 V	Yes
IP Rating	IP20
Safety Class	
Dimmable	No
Ambient Temp	60°C
Operating Temp	70°C
Housing Material	Metal
Output Terminal	Connector
Brand	One Light Ltd
Protection	Short Circuit / Overload / Overheat Protection

Packing Info

Box Length	13,8cm
Box Width	3,6cm
Box Height	10,3cm
Box Weight	0,227kg
Pcs/Carton	42
Barcode	5291889046073
HS Code	8504408290

Warranty

3 Years

Weee Directive

Yes

switch to
one light!

one
LIGHT

