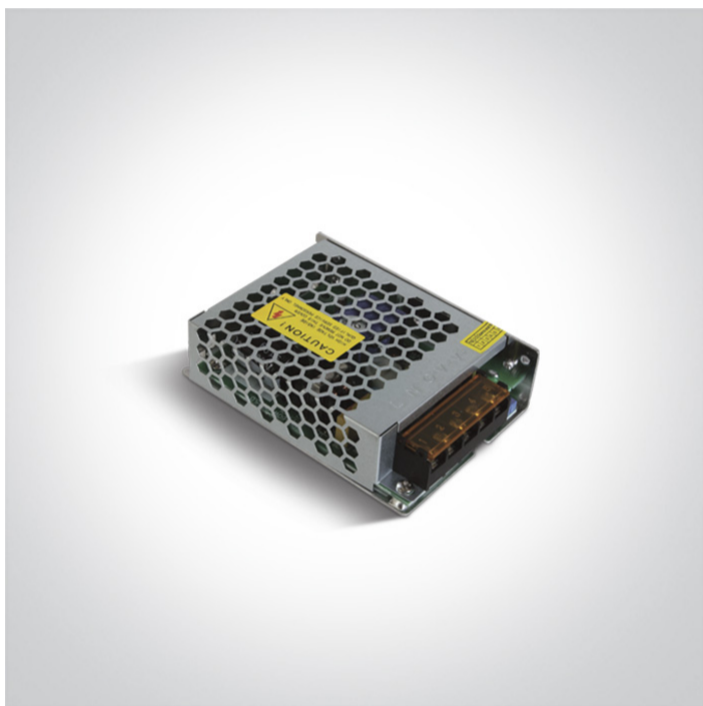


23 LED Drivers>The 24V DC Open Range Constant voltage

## 89060VN



60W 24V DC constant voltage driver, Open Range IP20.

Complies with standard EN61347-1 and any other specific standards.



### Downloads



### Dimensions




### Physical Specification

Item Group	23 LED Drivers
Family	The 24V DC Open Range Constant voltage
Order Code	89060VN
Material	Metal
Shape	Rectangular
Length	111mm
Width	78mm
Height	36mm
Indoor	Yes

### Electrical Characteristics

## Gear

Gear Type	Led Driver
Input Voltage	100-240V
50 Hz	Yes
60 Hz	Yes
Power(Watts)	60W
Power Factor	0,95
Constant Voltage	Yes
24 V	Yes
IP Rating	IP20
Safety Class	
Dimmable	No
Ambient Temp	60°C
Operating Temp	70°C
Housing Material	Metal
Output Terminal	Connector
Brand	One Light Ltd
Protection	Short Circuit / Overload / Overheat Protection

## Packing Info

Box Length	12cm
Box Width	3,6cm
Box Height	8,4cm
Box Weight	0,222kg
Pcs/Carton	120
Barcode	5291889048206
HS Code	8504408290

Warranty

3 Years

Weee Directive

Yes

switch to  
**one light!**

one  
LIGHT

