



Flexible LED light strip, with SMD2216 LEDs, 238LEDs/meter, 19,2W/meter. Supplied in 5 meters roll with white PCB and double adhesive tape for a better fixing.

Can be cut every 2,95cm (7-LED segment).

Requires 24V DC constant voltage LED driver.

Complies with standard EN60598-1 and any other specific standards.



Downloads



Dimensions



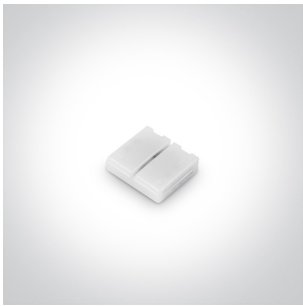
Gallery



Accessories



7835P





7837

Physical Specification


Item Group	08 Strips & Profiles
Family	The 19,2W/m Indoor 24V
Order Code	7870/W
Shape	Rectangular
Length	5000mm
Width	10mm
Surface Ceiling	Yes
Surface Wall	Yes
Surface Floor/Ground	Yes
Indoor	Yes

Electrical Characteristics

Fitting	
Input Type	Constant Voltage
Input Voltage	24V DC
Safety Class	
Power(Watts)	19,2W/m
IP Rating	IP20
Light Source	LED built in
LED Type	SMD 2216
LED Brand	Refond
LED Number	238LEDs/m
F Mark	

Illumination Data

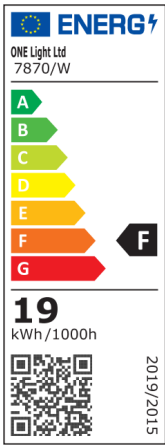
Colour Temperature	3000K
Lumen Output	1728lm/m
Light Efficiency	90lm/W

CRI	90
Illumination Diagram	

Packing Info

Box Length	24cm
Box Width	21,5cm
Box Height	2cm
Box Weight	0.220kg
Pcs/Carton	40
Barcode	5291889031918
HS Code	9405499090

Energy Label



Energy Class	F
--------------	---

Certification & Warranty

Warranty	5 years
----------	---------

switch to  
one light!

one  
LIGHT

