



Linear neonflex with SMD2835 LEDs, 140LEDs/m, 12W/m.

Supplied in 5 meters roll.

Can be cut every 5cm.

Requires 24V DC constant voltage LED driver.

Complies with standard EN60598-1 and any other specific standards.



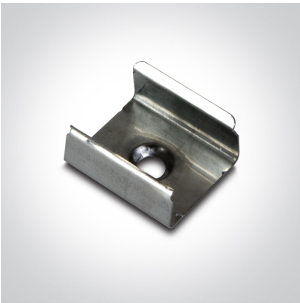
Downloads



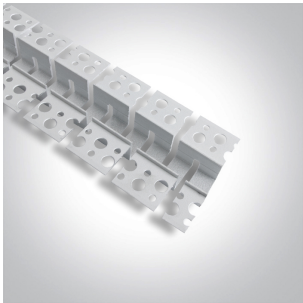
Dimensions



Related items



7841BF



7901BATR/W



Physical Specification

Item Group	07 Strips & Profiles
Family	Neon Flex Lightlines
Order Code	7841B/W
Material	Silicone
Shape	Rectangular
Length	5000mm
Width	16mm




Height	16mm
Surface Ceiling	Yes
Surface Wall	Yes
Surface Floor/Ground	Yes
Indoor	Yes
Outdoor	Yes

Electrical Characteristics

Gear	Order Separately
Fitting	
Input Type	Constant Voltage
Input Voltage	24V DC
Safety Class	
Light Source	LED built in
LED Type	SMD 2835
LED Number	140LEDs/m
F Mark	

Illumination Data

Colour Temperature	3000K
Lumen Output	550lm/m
Light Efficiency	45,83lm/W
CRI	90
Illumination Diagram	

Packing Info

Box Weight	1.640kg
Pcs/Carton	10
Barcode	5291889078579

HS Code

9405423100

Certification & Warranty

Warranty

3 years

Weee Directive

Yes

switch to  
one light!

