



IP68 Waterproof Flexible LED light strip, with SMD2216 LEDs, 70LEDs/meter, 4,8W/meter. Supplied in 5 meters roll with white PCB and double adhesive tape for a better fixing.

Can be cut every 10cm (7-LED segment).

Requires 24V DC constant voltage LED driver.

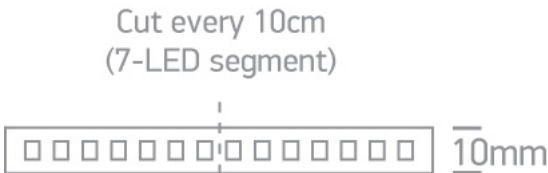
Complies with standard EN60598-1 and any other specific standards.



Downloads



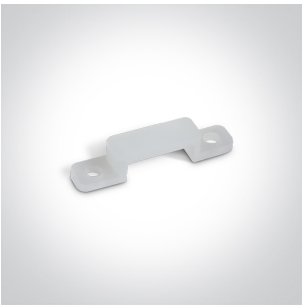
Dimensions



Gallery



Accessories



7826



7828

Related items




20030

Physical Specification


Item Group	08 Strips & Profiles
Family	The 4,8W/m Outdoor 24V
Order Code	7820W/D
Material	Silicone
Shape	Rectangular
Length	5000mm
Width	10mm
Surface Ceiling	Yes
Surface Wall	Yes
Surface Floor/Ground	Yes
Indoor	Yes
Outdoor	Yes

Electrical Characteristics

Fitting	
Input Type	Constant Voltage
Input Voltage	24V DC
Safety Class	
Power(Watts)	4,8W/m
IP Rating	IP68
Light Source	LED built in
LED Type	SMD 2216
LED Brand	Refond

LED Number	70LEDs/m
F Mark	

Illumination Data

Colour Temperature	6000K
Lumen Output	432lm/m
Light Efficiency	90lm/W
CRI	90
Illumination Diagram	

Packing Info

Box Length	26cm
Box Width	25cm
Box Height	2cm
Box Weight	0.440kg
Pcs/Carton	40
Barcode	5291889017615
HS Code	9405423100

Energy Label



Energy Class	F
--------------	---

Certification & Warranty

switch to
one light!

