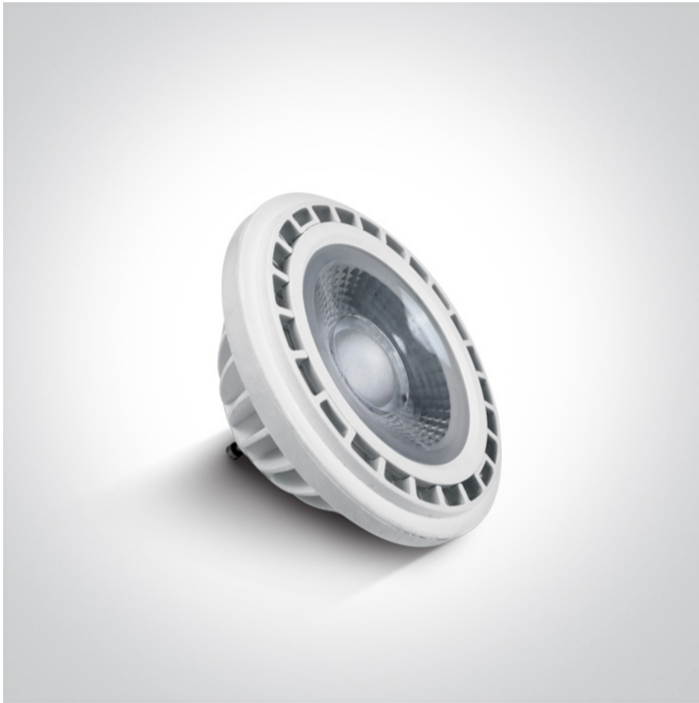


25 Lamps>Dimmable R111 GU10

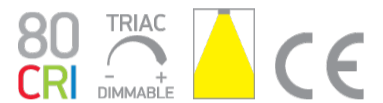
7315GD/W/45



Triac Dimmable R111 SMD LED GU10 15W 230V AC lamp.

Suitable for residential and commercial applications.

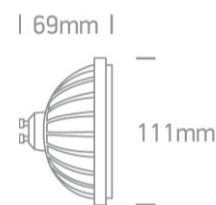
Complies with standard EN62560 and any other specific standards.



Downloads



Dimensions



Physical Specification

Item Group

25 Lamps

Family

Dimmable R111 GU10

Order Code

7315GD/W/45

Shape

Circular

Height

69mm

Diameter

111mm

Electrical Characteristics

Gear

No


Lamp

Input Type

Mains Voltage

Input Voltage	220-240V
50 Hz	Yes
60 Hz	Yes
Power(Watts)	15W
Lamp Type	LED
Lamp Holder	GU10
LED Type	SMD 2835
LED Brand	Epistar
Dimmable	Yes
Dimmer type	Triac

Illumination Data

Colour Temperature	3000K
Lumen Output	1200lm
Light Efficiency	80lm/W
CRI	80
Beam Angle	45°
Illumination Diagram	

Packing Info

Box Length	11,5cm
Box Width	9cm
Box Height	9cm
Box Weight	0.265kg
Pcs/Carton	20
Barcode	5291889041771
HS Code	8539520000

Energy Label



Energy Class

F

Energy Consumption

15kWh/1000h

Certification & Warranty

Warranty

2 years

Switching Cycles

15000

Weee Directive

Yes

switch to
one light!

one
LIGHT

