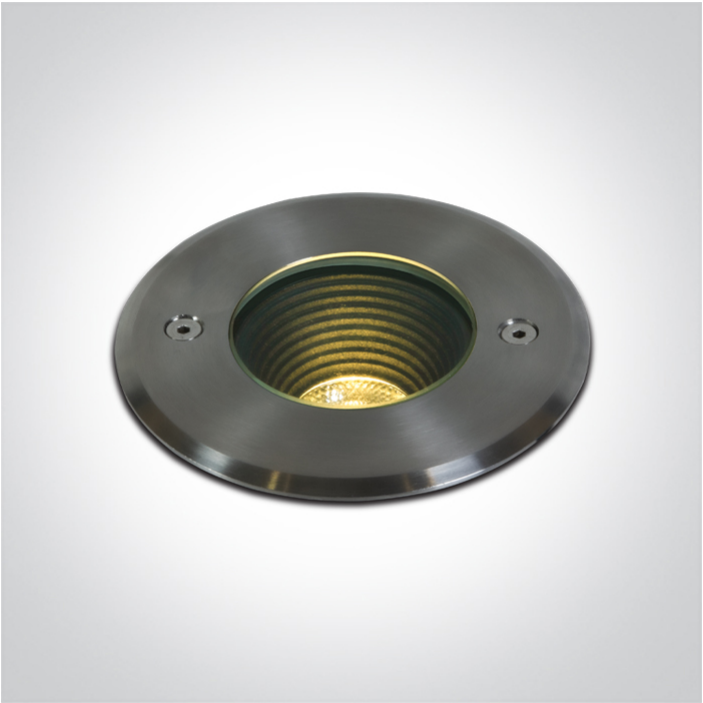




19 Wall Recessed & Inground>The Dark Light Inground Range

69070B/W



10W COB LED inground uplighter. IP67, stainless steel 316L and die cast aluminium body.

Supplied with non-dimmable LED driver and box for concrete installation.

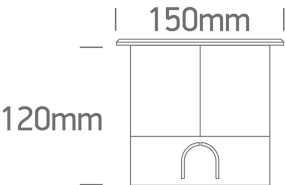
Complies with standard EN60598-1 and any other specific standards.



Downloads



Dimensions



Gallery





Physical Specification

Item Group	19 Wall Recessed & Inground
Family	The Dark Light Inground Range
Order Code	69070B/W
Colour	Stainless Steel
Material	Die Cast
Shape	Circular
Height	120mm

Diameter	150mm
Cutout Hole Diameter	137mm
Inground	Yes
Depth Required	140mm+300mm drainage
Indoor	Yes
Outdoor	Yes
Adjustable	No
IK Rating	10

Electrical Characteristics

Gear	Built In
Fitting + Driver	
Input Voltage	220-240V
50 Hz	Yes
60 Hz	Yes
Safety Class	
Power(Watts)	10W
IP Rating	IP67
Light Source	LED built in
Dimmable	No
Cable Length	200cm
F Mark	

Fitting	
Input Type	Constant Current
Light Source	LED built in
LED Type	COB
LED Brand	Cree

Gear
------

Gear Type
Input Voltage
50 Hz
60 Hz
Power Factor
Constant Current
Dimmable
Housing Material
Output Terminal

Led Driver
220-240V
Yes
Yes
0,9
Yes
No
Plastic
Connector

Illumination Data

Colour Temperature
Lumen Output
Light Efficiency
CRI
Beam Angle
Illumination Diagram
Dark Light

3000K
800lm
80lm/W
80
20°

Yes

Packing Info

Pcs/Carton
Barcode
HS Code

20
5291889079675
9405413990

Certification & Warranty

Warranty

2 years

Weee Directive

Yes

switch to  
**one light!**

one  
LIGHT

