

19 Wall Recessed & Inground>The COB Honeycomb Range

69052/C



3W COB LED inground with honeycomb, IP67.

Requires 24V driver.

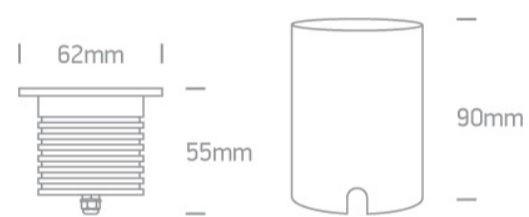
Complies with standard EN60598-1 and any other specific standards.



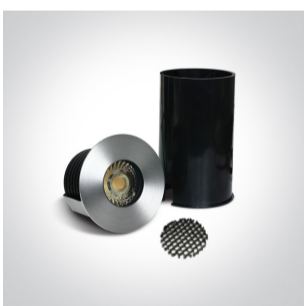
Downloads



Dimensions



Gallery



Must be ordered separately





89015V

## Physical Specification

Item Group	19 Wall Recessed & Inground
Family	The COB Honeycomb Range
Order Code	69052/C
Colour	Stainless Steel
Material	Stainless Steel 316
Diffuser Material	Glass
Shape	Circular
Height	55mm
Diameter	62mm
Cutout Hole Diameter	52mm
Inground	Yes
Depth Required	100mm + 300mm drainage
Indoor	Yes
Outdoor	Yes
IK Rating	8

## Electrical Characteristics

### Fitting

Input Type	Constant Voltage
Input Voltage	24V DC
Safety Class	
Power(Watts)	3W
IP Rating	IP67
Light Source	LED built in
LED Type	COB
LED Brand	Prolight
Cable Length	200cm
F Mark	

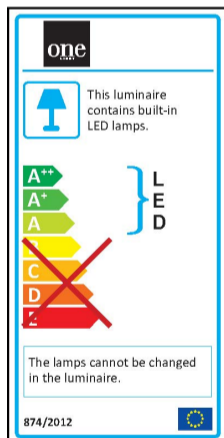
## Illumination Data

Colour Temperature	4000K
Lumen Output	240lm
Light Efficiency	80lm/W
CRI	80
Beam Angle	36°
Illumination Diagram	

## Packing Info

Box Length	8cm
Box Width	10,5cm
Box Height	8cm
Pcs/Carton	50
Barcode	5291889065715
HS Code	9405409900

## Energy Label



Warranty

2 Years

Weee Directive

Yes

switch to  
**one light!**

one  
LIGHT

