

19 Wall Recessed & Inground>The COB Honeycomb Range

69052A/W



13W COB LED inground with honeycomb, IP67.

Requires 350mA driver.

Complies with standard EN60598-1 and any other specific standards.



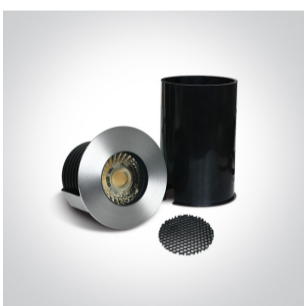
Downloads



Dimensions



Gallery



Must be ordered separately



89015

Related items




89015T

Physical Specification

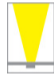
| | |
|----------------------|-----------------------------|
| Item Group | 19 Wall Recessed & Inground |
| Family | The COB Honeycomb Range |
| Order Code | 69052A/W |
| Colour | Aluminium |
| Material | Aluminium |
| Diffuser Material | Glass |
| Shape | Circular |
| Height | 80mm |
| Diameter | 92mm |
| Cutout Hole Diameter | 75mm |
| Inground | Yes |
| Depth Required | 140mm + 300mm drainage |
| Indoor | Yes |
| Outdoor | Yes |
| Adjustable | No |
| IK Rating | 8 |

Electrical Characteristics

| | |
|---------------|------------------|
| Fitting | |
| Input Type | Constant Current |
| Input Current | 350mA |
| Voltage | 37V |
| Safety Class | III |

| | |
|--------------|---|
| Power(Watts) | 13W |
| IP Rating | IP67 |
| Light Source | LED built in |
| LED Type | COB |
| LED Brand | Bridgelux |
| Cable Length | 200cm |
| F Mark |  |

Illumination Data

| | |
|----------------------|---|
| Colour Temperature | 3000K |
| Lumen Output | 1000lm |
| Light Efficiency | 76,92lm/W |
| CRI | 80 |
| Beam Angle | 36° |
| Illumination Diagram |  |

Packing Info

| | |
|------------|---------------|
| Box Length | 11,5cm |
| Box Width | 10,5cm |
| Box Height | 13cm |
| Pcs/Carton | 24 |
| Barcode | 5291889056997 |
| HS Code | 9405409900 |

Energy Label



Certification & Warranty

Warranty

2 Years

Weee Directive

Yes

switch to
one light!

one
LIGHT

