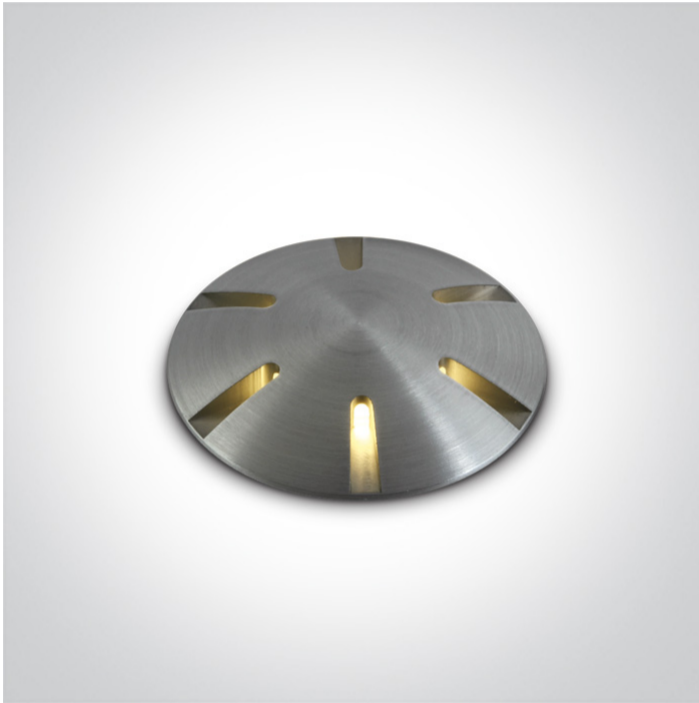


19 Wall Recessed & Inground>The Inground Mini Series Natural Aluminium

69044/AL/W



1W LED inground, IP67, aluminium, for path illumination.

Requires 350mA driver.

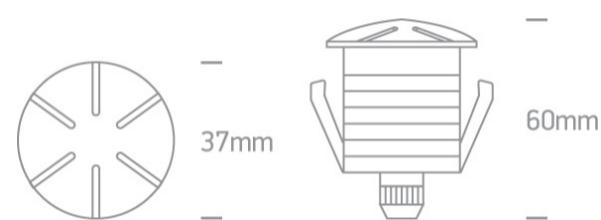
Complies with standard EN60598-1 and any other specific standards.



Downloads



Dimensions



Gallery





Physical Specification

Item Group	19 Wall Recessed & Inground
Family	The Inground Mini Series Natural Aluminium
Order Code	69044/AL/W
Colour	Aluminium
Material	Natural Aluminium
Shape	Circular
Height	53mm


Diameter	37mm
Cutout Hole Diameter	30mm decking 35mm concrete
Inground	Yes
Depth Required	80mm deck 95mm+300mm drainage Concrete
Indoor	Yes
Outdoor	Yes

Electrical Characteristics

Fitting

Input Type	Constant Current
Input Current	350mA
Voltage	3,1V
Safety Class	
Power(Watts)	1W
IP Rating	IP67
Light Source	LED built in
LED Brand	Osram
LED Number	1
Cable Length	200cm
F Mark	

Illumination Data

Colour Temperature	3000K
Lumen Output	80lm
Light Efficiency	80lm/W
CRI	90
Illumination Diagram	

Packing Info

Box Length	6,5cm
Box Width	5cm
Box Height	10,5cm
Box Weight	0.198kg
Pcs/Carton	50
Barcode	5291889050285
HS Code	9405413990

Certification & Warranty

Warranty	2 years
Weee Directive	Yes

switch to
one light!

one
LIGHT

