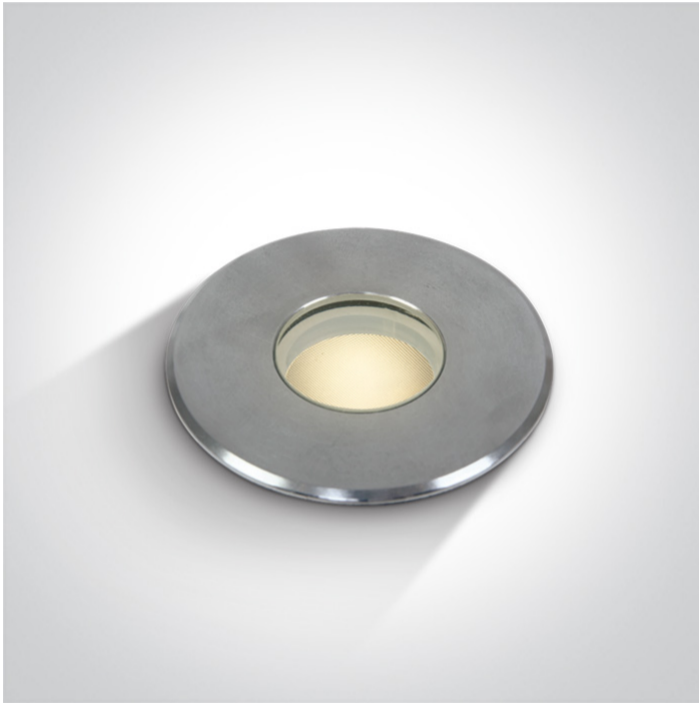


19 Wall Recessed & Inground>The COB Inground Range Stainless steel

69028/W



2W COB LED inground, IP67, stainless steel 316, for path illumination.

Supplied with non-dimmable LED driver.

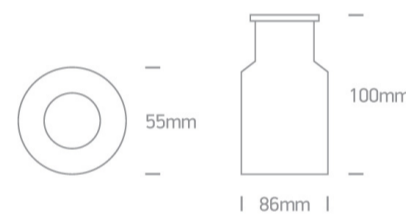
Complies with standard EN60598-1 and any other specific standards.



Downloads



Dimensions



Gallery






Physical Specification

Item Group	19 Wall Recessed & Inground
Family	The COB Inground Range Stainless steel
Order Code	69028/W
Colour	Stainless Steel
Material	Stainless Steel 316
Diffuser Material	Glass
Shape	Circular

Height	100mm
Diameter	55mm
Cutout Hole Diameter	86mm
Inground	Yes
Depth Required	100mm+300mm drainage
Indoor	Yes
Outdoor	Yes
Adjustable	No


Electrical Characteristics

Gear	Built In
Fitting + Driver	
Input Voltage	100-240V
50 Hz	Yes
60 Hz	Yes
Safety Class	
Power(Watts)	2W
IP Rating	IP67
Light Source	LED built in
Dimmable	No
Cable Length	50cm
F Mark	

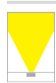
Fitting	
Input Type	Constant Current
Input Current	600mA
Voltage	3V
Safety Class	
Power(Watts)	1,8W
IP Rating	IP67

Light Source	LED built in
LED Type	COB
LED Brand	Osram

Gear

Gear Type	Led Driver
Input Voltage	100-240V
50 Hz	Yes
60 Hz	Yes
Power(Watts)	2W
Power Factor	0,9
Constant Current	Yes
600mA	3V
IP Rating	IP20
Safety Class	
Dimmable	No
Ambient Temp	-20~+55°C
Operating Temp	80°C
Housing Material	Plastic
Output Terminal	Connector
Brand	BTEC
Protection	Short Circuit

Illumination Data

Colour Temperature	3000K
Lumen Output	65lm
Light Efficiency	32,5lm/W
CRI	80
Beam Angle	30°
Illumination Diagram	

Packing Info

Box Weight

0.437kg

Pcs/Carton

24

Barcode

5291889038702

HS Code

9405413990

Certification & Warranty

Warranty

2 years

Weee Directive

Yes

switch to
one light!

one
LIGHT

