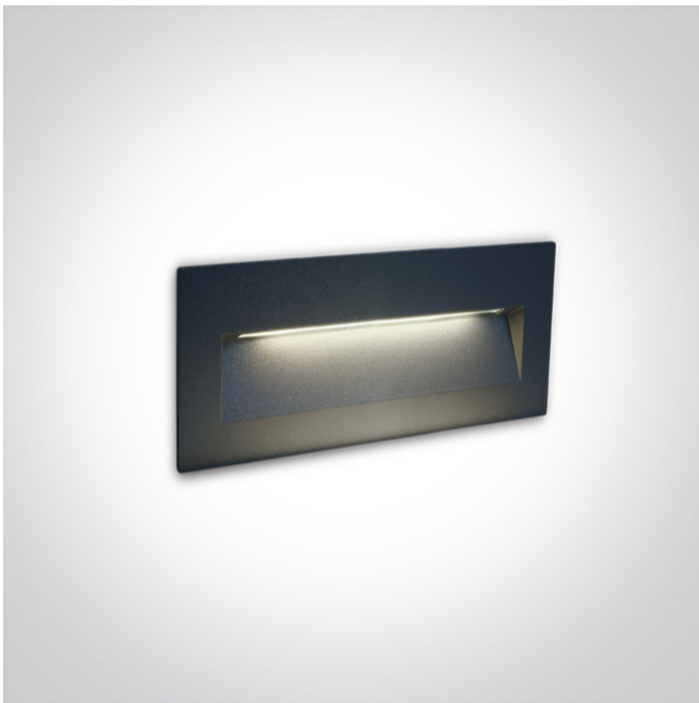


18 Wall Recessed & Inground > Outdoor Dark Light Wall Recessed CCT V

68068B/AN/V



6W CCT Variable LED wall recessed light.

Complete with non-dimmable driver.

Supplied with box for concrete installation.

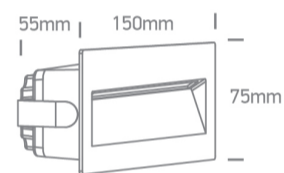
Complies with standard EN60598-1 and any other specific standards.



Downloads



Dimensions






Physical Specification

Item Group	18 Wall Recessed & Inground
Family	Outdoor Dark Light Wall Recessed CCT V
Order Code	68068B/AN/V
Colour	Anthracite
Material	Aluminium
Shape	Rectangular
Length	150mm
Width	75mm
Height	55mm
Cutout Hole Width	145mm Concrete 130mm Gypsum
Cutout Hole Length	70mm Concrete 60mm Gypsum
Recessed wall	Yes

Depth Required	80mm
Indoor	Yes
Outdoor	Yes
Adjustable	No

Electrical Characteristics

Gear	Built In
Fitting + Driver	
Input Voltage	220-240V
50 Hz	Yes
60 Hz	Yes
Safety Class	
Power(Watts)	6W
IP Rating	IP65
Light Source	LED built in
Dimmable	No
F Mark	

Fitting	
Input Type	Constant Current
Light Source	LED built in
LED Type	SMD
F Mark	

Gear	
Gear Type	Led Driver
Input Voltage	220-240V
50 Hz	Yes
60 Hz	Yes
Output	300mA

Illumination Data

Colour Code	2200K-2700K-3000K-4000K
Lumen Output	400lm
Light Efficiency	66,67lm/W
CRI	80
Illumination Diagram	
Dark Light	Yes

Packing Info

Box Length
Box Width
Box Height
Box Weight
Pcs/Carton
Barcode

Certification & Warranty

Warranty	2 Years
Weee Directive	Yes

switch to
one light!

one
LIGHT

