

19 Wall Recessed & Inground > Indoor/Outdoor Decorative Wall Recessed
Aluminium

68004A/W/W



1W 350mA LED wall recessed light, IP54, ideal for both indoor and outdoor installation.

Requires 350mA driver.

Supplied with box for concrete installation

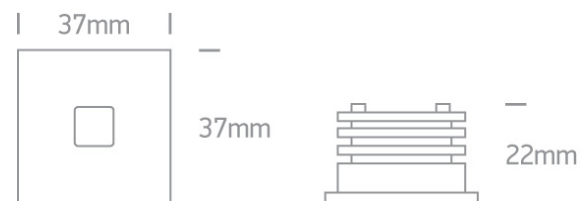
Complies with standard EN60598-1 and any other specific standards.



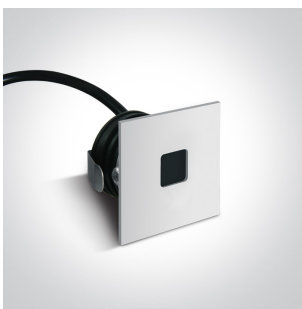
Downloads



Dimensions



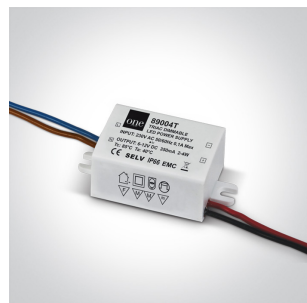
Gallery



Must be ordered separately



89004





89004T

Physical Specification

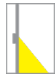
Item Group	19 Wall Recessed & Inground
Family	Indoor/Outdoor Decorative Wall Recessed Aluminium
Order Code	68004A/W/W
Colour	White
Material	Aluminium
Shape	Rectangular
Length	37mm
Width	37mm
Height	22mm
Cutout Hole Diameter	36mm for Concrete Installation 33mm for Gypsum Installation
Recessed wall	Yes
Depth Required	50mm for Concrete Installation 30mm for Gyprum Installaiton
Indoor	Yes
Outdoor	Yes

Electrical Characteristics

Fitting

Input Type	Constant Current
Input Current	350mA
Safety Class	
Power(Watts)	1W
IP Rating	IP54
Light Source	LED built in
LED Brand	Osram
Cable Length	200cm
F Mark	

Illumination Data

Colour Temperature	3000K
Lumen Output	40lm
Light Efficiency	40lm/W
CRI	90
Beam Angle	60°
Illumination Diagram	
Dark Light	Yes

Packing Info

Box Weight	0.121kg
Pcs/Carton	60
Barcode	5291889050308
HS Code	9405413990

Certification & Warranty

Warranty	2 years
----------	---------

switch to
one light!

one
LIGHT

