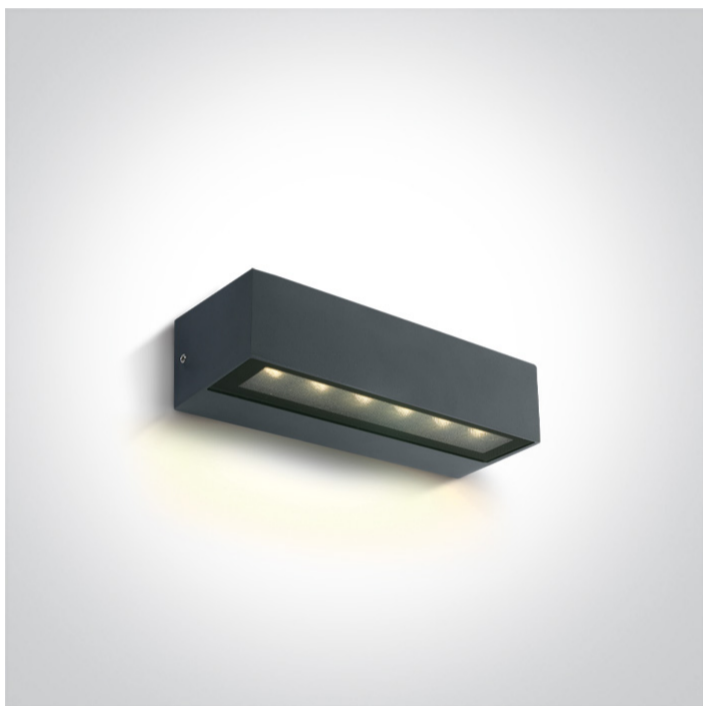


13 Wall & Ceiling LED>Linear Outdoor Series Simple Sided

67526A1/AN/W



8W Wall light, IP65.

Complete with 350mA driver.

Complies with standard EN60598-1 and any other specific standards.



Downloads



Dimensions



Physical Specification

Item Group	13 Wall & Ceiling LED
Family	Linear Outdoor Series Simple Sided
Order Code	67526A1/AN/W
Colour	Anthracite
Material	Die Cast
Shape	Rectangular
Length	222mm
Width	70mm
Height	50mm
Surface Wall	Yes
Indoor	Yes
Outdoor	Yes

Adjustable	No
------------	----

IK Rating	7
-----------	---

Electrical Characteristics

Gear	Built In
------	----------

Fitting + Driver

Input Voltage	220-240V
---------------	----------

50 Hz	Yes
-------	-----

60 Hz	Yes
-------	-----

Safety Class	
--------------	--

Power(Watts)	8W
--------------	----

IP Rating	IP65
-----------	------

Light Source	LED built in
--------------	--------------

Dimmable	No
----------	----

F Mark	
--------	---

Fitting

Input Type	Constant Current
------------	------------------

Input Current	350mA
---------------	-------

Voltage	17,92V
---------	--------

Power(Watts)	6,27W
--------------	-------

IP Rating	IP65
-----------	------

Light Source	LED built in
--------------	--------------

LED Type	SMD 3030
----------	----------


LED Brand	Osram
-----------	-------

Gear


Gear Type	Led Driver
-----------	------------

Input Voltage	220-240V
---------------	----------

50 Hz	Yes
-------	-----

60 Hz	Yes
Power(Watts)	2,8-7W
Power Factor	0,9
Constant Current	Yes
350mA	8-20V
IP Rating	IP20
Safety Class	
Dimmable	No
Housing Material	Plastic
Brand	Eaglerise

Illumination Data

Colour Temperature	3000K
Lumen Output	480lm
Light Efficiency	60lm/W
CRI	80
Illumination Diagram	

Packing Info

Box Weight	1.000kg
Pcs/Carton	12
Barcode	5291889075745
HS Code	9405413990

Certification & Warranty

switch to
one light!

one
LIGHT

