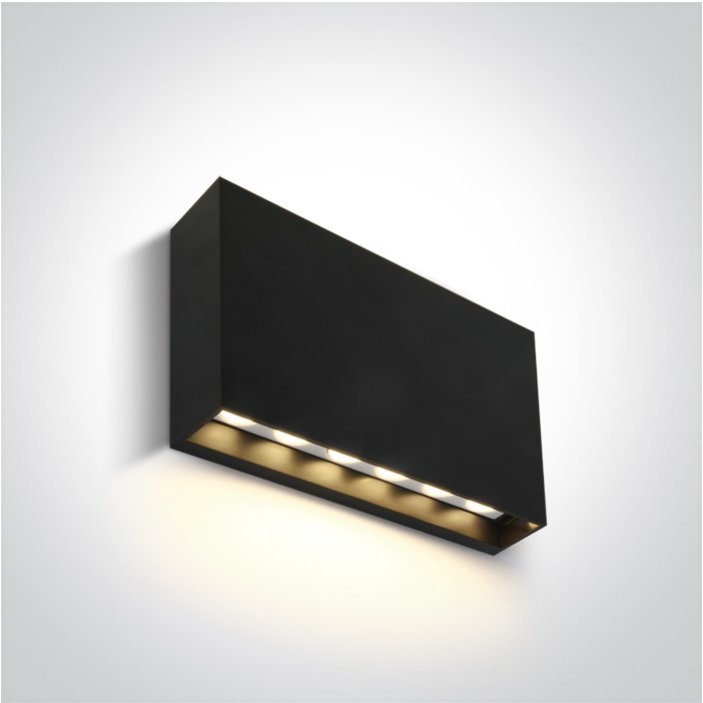




New 2025 Edition 3>Wall & Ceiling LED

67472A/AN/V



6W CCT Variable SMD LED wall light .

Complete with non-dimmable driver.

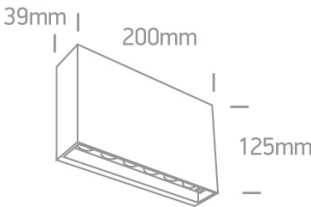
Complies with standard EN60598-1 and any other specific standards.



Downloads



Dimensions



Physical Specification

Item Group	New 2025 Edition 3
Family	Wall & Ceiling LED
Order Code	67472A/AN/V
Colour	Anthracite
Material	ABS
Diffuser Material	PC
Shape	Rectangular
Length	200mm
Width	39mm
Height	125mm
Surface Wall	Yes
Indoor	Yes

Outdoor
Adjustable

Yes
No

Electrical Characteristics

Gear

Built In

Fitting + Driver

Input Voltage
50 Hz
60 Hz
Safety Class
Power(Watts)
IP Rating
Light Source
Dimmable
F Mark

220-240V
Yes
Yes

6W
IP65
LED built in
No


Fitting

Input Type
Input Current
Light Source
LED Type


Constant Current
300mA
LED built in
SMD

Gear

Gear Type
Input Voltage
50 Hz
60 Hz
Constant Current

Led Driver
220-240V
Yes
Yes
Yes

Illumination Data

Colour Code	2700K-3300K-4000K
Lumen Output	500lm
Light Efficiency	83,33lm/W
CRI	80
Illumination Diagram	

Packing Info

Box Weight	0.490kg
Pcs/Carton	20
Barcode	5291889083870
HS Code	9405114090

Certification & Warranty

Warranty	2 years
----------	---------

switch to
one light!

one
LIGHT

