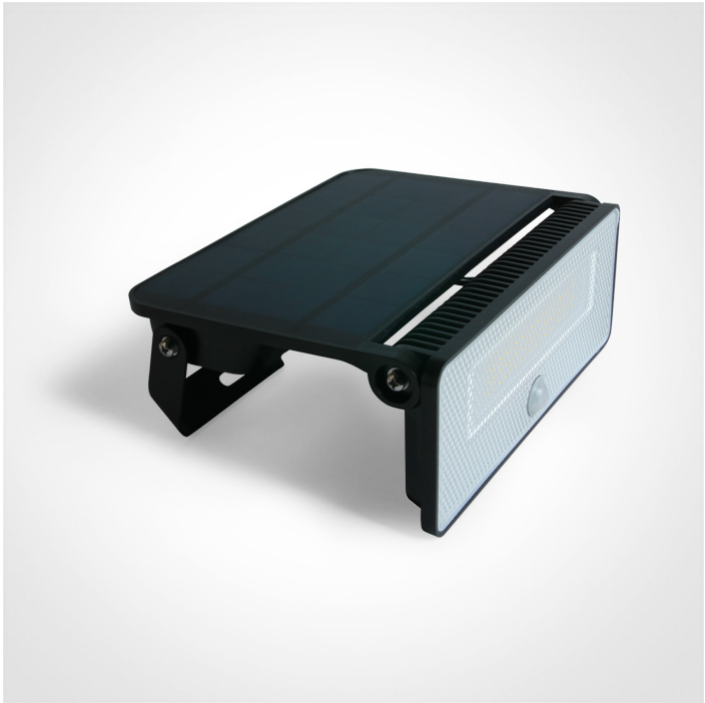




New 2025 Edition 2>Wall & Ceiling LED

65748/B/C



12W Solar Light with 4 modes of operation, night sensor and PIR sensor.

- Mode 1: 100% output for 18s when motion detected.
Mode 2: Fixed 30 lumen output. 100% output for 18 seconds when motion detected.
Mode 3: Fixed 30 lumen output.
Mode 4: Sleep mode.

Complete with 2x2200mAh lithium battery.

Complies with standard EN60598-1 and any other specific

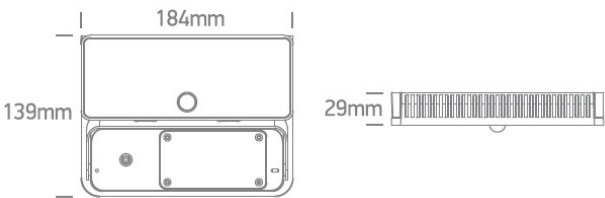
standards.



Downloads



Dimensions



Physical Specification

Item Group	New 2025 Edition 2
Family	Wall & Ceiling LED
Order Code	65748/B/C
Colour	Black
Material	ABS + PC
Shape	Rectangular
Length	184mm
Width	139mm
Height	29mm
Surface Wall	Yes

Outdoor
Adjustable

Yes
1 Direction

Electrical Characteristics

Gear

Built In

Fitting + Driver

Power(Watts)

12W

IP Rating

IP54

Light Source

LED built in

F Mark


--

Fitting

Input Type

Constant Current

IP Rating

IP54

Light Source

LED built in

LED Type

SMD

Gear

IP Rating

IP54

Battery Capacity

2x2200mAh

Illumination Data

Colour Temperature

4000K

Lumen Output

1600lm

CRI

80

Illumination Diagram



Packing Info

Pcs/Carton

20

Warranty
Weee Directive

2 Years
Yes

switch to
one light!

