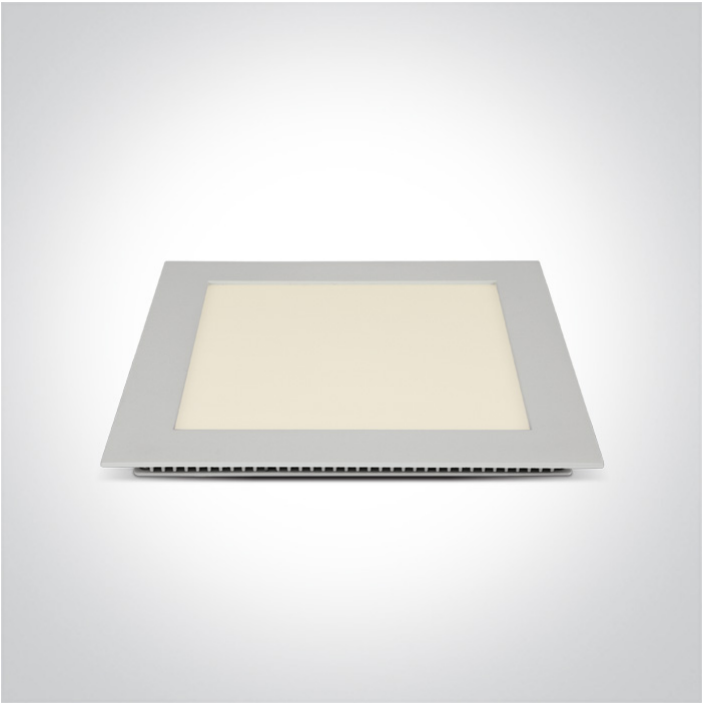




06 Downlights Fixed LED>The 16-30W Square Recessed Panels CCT V

50122FA/W/V



CCT Variable 22W slim downlight LED, IP20, ideal for commercial applications such as offices, galleries and showrooms.

Supplied with 550mA non-dimmable LED driver.

Complies with standard EN60598-1 and any other specific standards.



Downloads



Dimensions



Gallery






Physical Specification

Item Group	06 Downlights Fixed LED
Family	The 16-30W Square Recessed Panels CCT V
Order Code	50122FA/W/V
Colour	White
Material	Die Cast
Diffuser Material	Acrylic
Shape	Rectangular

Length	225mm
Width	225mm
Height	22mm
Cutout Hole Width	210mm
Cutout Hole Length	210mm
Recessed Ceiling	Yes
Depth Required	50mm
Indoor	Yes
Adjustable	No

Electrical Characteristics

Gear	External-Included
Fitting + Driver	
Input Voltage	220-240V
50 Hz	Yes
60 Hz	Yes
Safety Class	
Power(Watts)	22W
IP Rating	IP20
Light Source	LED built in
Dimmable	No
F Mark	


Fitting	
Input Type	Constant Current
Input Current	550mA
Safety Class	
IP Rating	IP20
Light Source	LED built in
LED Type	SMD 2835

LED Brand
LED Number

Epistar
168


Gear

Gear Type
Input Voltage
50 Hz
60 Hz
Power(Watts)
Constant Current
550mA
IP Rating
Safety Class
Dimmable
Ambient Temp
Operating Temp
Housing Material
Brand

Led Driver
220-240V
Yes
Yes
13,75-23W
Yes
25-42V
IP20

No
50°C
75°C
Plastic
Lifud

Illumination Data

Colour Temperature
Lumen Output
Light Efficiency
CRI
Beam Angle
Illumination Diagram

3000K-4000K-5700K
2200lm
100lm/W
80
120°


Packing Info

Box Weight
Pcs/Carton

0.687kg
16

Barcode	5291889078982
HS Code	9405119090

Certification & Warranty

Warranty	3 years
Weee Directive	Yes

switch to
one light!

