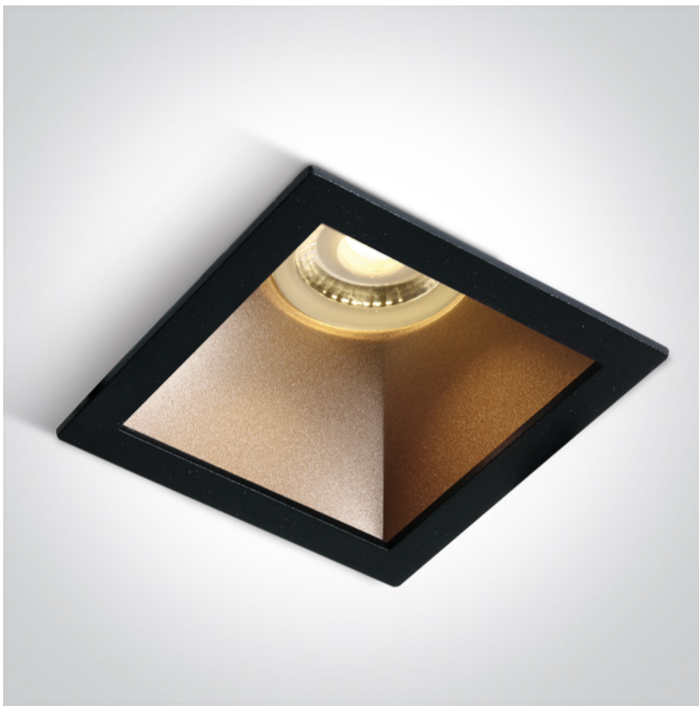


01 Recessed Spots Fixed > The Chill Out Range Square

50105M/B/BS



Black Body Brass Reflector Dark Light Recessed MR16 spot with GU10 lampholder.

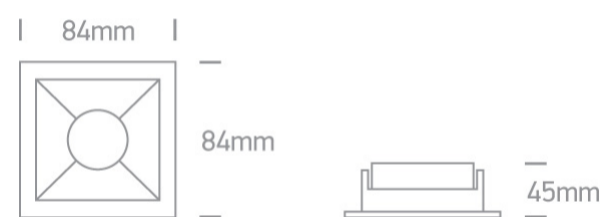
Complies with standard EN60598-1 and any other specific standards.



Downloads



Dimensions





Physical Specification

| | |
|--------------------|----------------------------|
| Item Group | 01 Recessed Spots Fixed |
| Family | The Chill Out Range Square |
| Order Code | 50105M/B/BS |
| Colour | Black-Brass |
| Material | Aluminium |
| Shape | Rectangular |
| Length | 84mm |
| Width | 84mm |
| Height | 45mm |
| Cutout Hole Width | 76mm |
| Cutout Hole Length | 76mm |
| Recessed Ceiling | Yes |

| | |
|----------------|-------|
| Depth Required | 130mm |
| Indoor | Yes |
| Adjustable | No |

Electrical Characteristics

| | |
|------------------|---|
| Gear | No |
| Fitting + Driver | |
| Input Voltage | 100-240V |
| 50 Hz | Yes |
| 60 Hz | Yes |
| Safety Class |  |
| Power(Watts) | 10W |
| IP Rating | IP20 |
| Light Source | Replaceable lamp |
| Lamp Holder | GU10 |
| Number of Lamps | 1 |
| Dimmable | N/A |
| Cable Length | 15cm |
| F Mark |  |

Illumination Data

| | |
|----------------------|---|
| Illumination Diagram |  |
| Dark Light | Yes |

Packing Info

| | |
|------------|---------|
| Box Length | 10cm |
| Box Width | 10cm |
| Box Height | 10cm |
| Box Weight | 0.192kg |

Pcs/Carton

50

Barcode

5291889053187

HS Code

9405413990

Certification & Warranty

Warranty

5 years

switch to
one light!

one
LIGHT

