



Assymetric LED Linear magnetic track light, ideal for shops and showrooms.

Suitable for MAXI magnetic tracks.

Complies with standard EN60598-1 and any other specific standards.



Downloads



Dimensions



Gallery



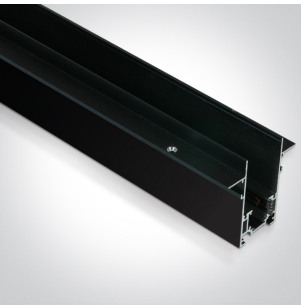
Related items



42001/B



42001R/B



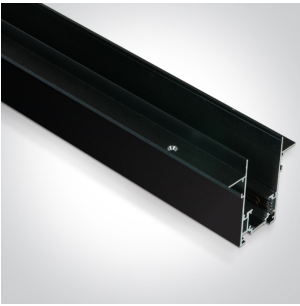
42001TR/B



42002/B



42002R/B




42002TR/B

Physical Specification


Item Group	10 Tracks & Magnetic
Family	Magnetic Linear Lights
Order Code	42120B/B/W
Colour	Black
Material	Aluminium
Diffuser Material	PC
Shape	Rectangular
Length	140mm
Width	37mm
Height	50mm
Surface Wall	Yes
Track mounted	Yes
Indoor	Yes
Adjustable	No

Electrical Characteristics

Fitting	
Input Type	Constant Voltage
Input Voltage	48V DC
Safety Class	
Power(Watts)	12W
IP Rating	IP20
Light Source	LED built in
LED Type	SMD 3535
LED Brand	Bridgelux

Illumination Data

Colour Temperature	3000K
--------------------	-------

Lumen Output	960lm
Light Efficiency	80lm/W
CRI	90
Beam Angle	90°
Illumination Diagram	

Packing Info

Box Weight	0.292kg
Pcs/Carton	40
Barcode	5291889072331
HS Code	9405413990

Certification & Warranty

Warranty	3 years
----------	---------

switch to
one light!

