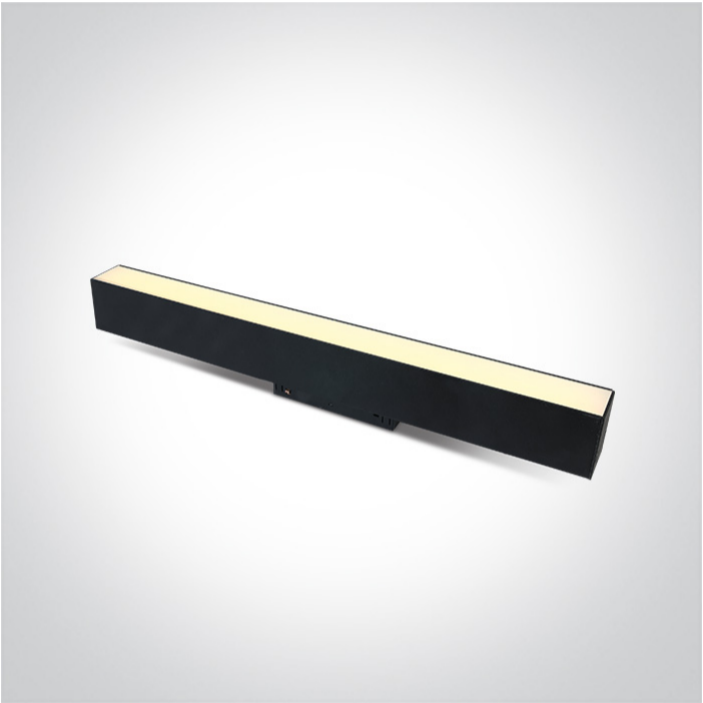




New 2025 Edition 3>Magnetic Lights

42100BL/B/V



25W DALI DT8 CCT Tunable LED Linear light for magnetic profile.

Suitable for MAXI magnetic profiles.

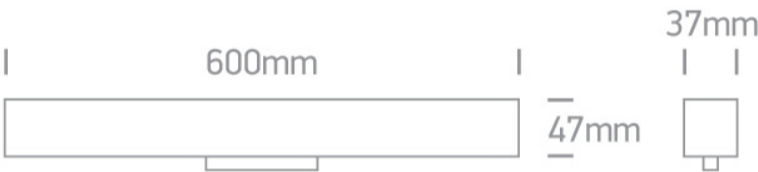
Complies with standard EN60598-1 and any other specific standards.



Downloads



Dimensions



Physical Specification

|                   |                    |
|-------------------|--------------------|
| Item Group        | New 2025 Edition 3 |
| Family            | Magnetic Lights    |
| Order Code        | 42100BL/B/V        |
| Colour            | Black              |
| Material          | Aluminium          |
| Diffuser Material | PC                 |
| Shape             | Rectangular        |
| Length            | 600mm              |
| Width             | 37mm               |
| Height            | 47mm               |
| Surface Ceiling   | Yes                |
| Surface Wall      | Yes                |



|               |
|---------------|
| Track mounted |
| Indoor        |
| Adjustable    |

|     |
|-----|
| Yes |
| Yes |
| No  |

Electrical Characteristics

Fitting

|               |
|---------------|
| Input Type    |
| Input Voltage |
| Safety Class  |
| Power(Watts)  |
| IP Rating     |
| Light Source  |
| F Mark        |

|   |
|---|
| Constant Voltage  |
| 48V DC  |
|    |
| 25W   |
| IP20  |
| LED built in  |
|  |

Illumination Data

|                      |
|----------------------|
| Colour Code          |
| Lumen Output         |
| Light Efficiency     |
| CRI                  |
| Beam Angle           |
| Illumination Diagram |

|   |
|---|
| 3000K-4000K DT8 Tunable   |
| 2000lm  |
| 80lm/W  |
| 90  |
| 120°  |
|  |

Packing Info

|            |
|------------|
| Box Weight |
| Pcs/Carton |
| Barcode    |
| HS Code    |

|               |
|---------------|
| 0.785kg       |
| 20            |
| 5291889086185 |
| 9405413990    |

Warranty

3 years

switch to  
**one light!**

