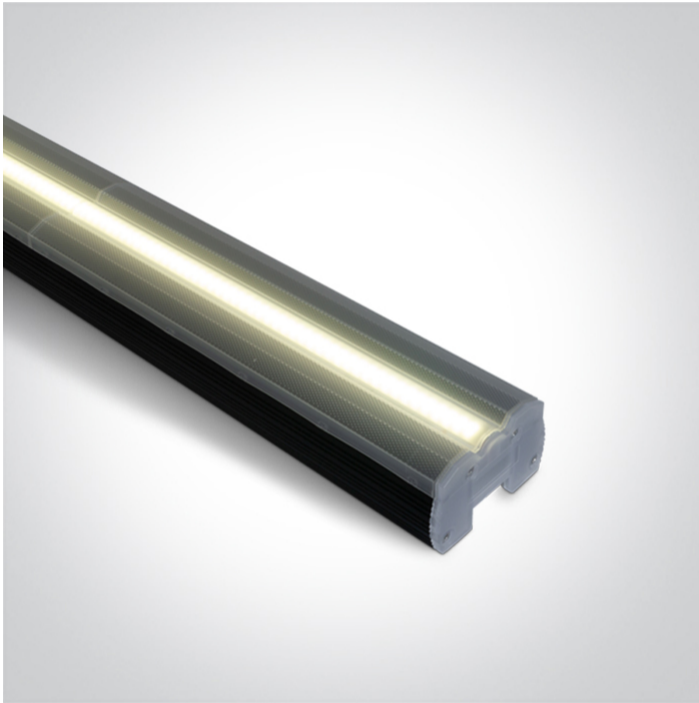


20 Industrial & Floodlights>The Supermarket Linear System CCT V & PV

38100C/B/V



60W LED CCT & Power variable fitting.

Maximum 600W can be connected together.

Complete with 2 pcs fixing clips & plastic connector.

Supplied with non-dimmable LED driver.

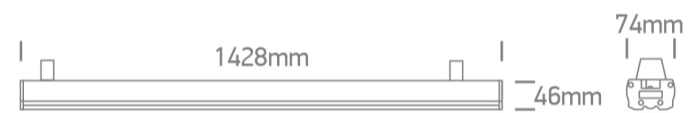
Complies with standard EN60598-1 and any other specific standards.



Downloads



Dimensions



Gallery



Accessories



050012





050012A

Physical Specification

Item Group	20 Industrial & Floodlights
Family	The Supermarket Linear System CCT V & PV
Order Code	38100C/B/V
Colour	Black
Material	Aluminium
Shape	Rectangular
Length	1428mm
Width	74mm
Height	46mm
Surface Ceiling	Yes
Indoor	Yes
Adjustable	No


Electrical Characteristics

Gear	Built In
Fitting + Driver	
Input Voltage	220-240V
50 Hz	Yes
60 Hz	Yes
Safety Class	
Power(Watts)	34W/40W/50W/60W
IP Rating	IP20
Light Source	LED built in
Dimmable	No
F Mark	

Fitting	
Input Type	Constant Current
Light Source	LED built in

LED Type	SMD
Cable Length	170cm
Gear	
Gear Type	Led Driver
Input Voltage	220-240V
50 Hz	Yes
60 Hz	Yes
Dimmable	No

Illumination Data

Colour Temperature	3000K-4000K-5000K
Lumen Output	7800@60W
Light Efficiency	130lm/W
CRI	90
Beam Angle	110°
Illumination Diagram	

Packing Info

Certification & Warranty

Warranty	3 Years
Weee Directive	Yes

switch to
one light!

one
LIGHT

