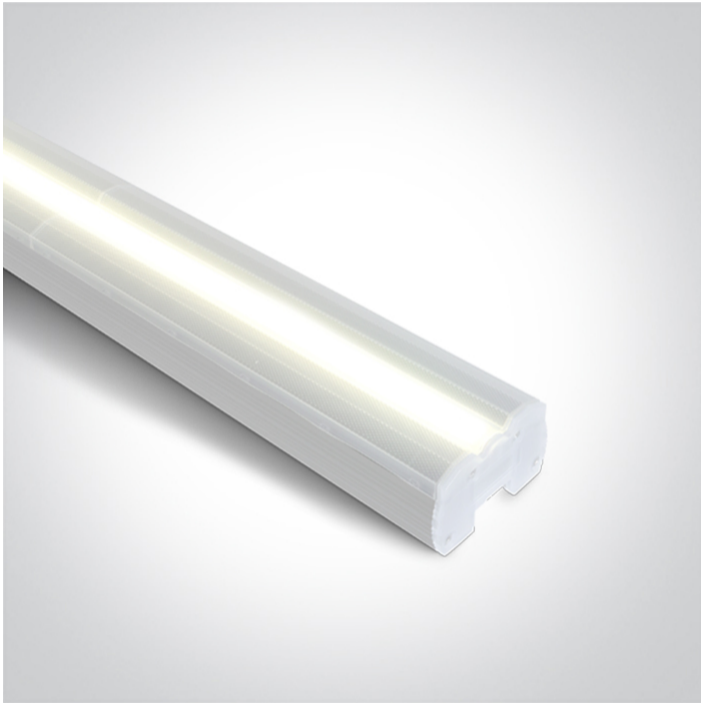


20 Industrial & Floodlights>The Supermarket Linear System CCT V & PV

38100B/W/V



40W LED CCT & Power variable fitting.

Maximum 600W can be connected together.

Complete with 2 pcs fixing clips & plastic connector.

Supplied with non-dimmable LED driver.

Complies with standard EN60598-1 and any other specific standards.



Downloads



Dimensions



Gallery



Accessories



050012





050012A

Physical Specification

Item Group	20 Industrial & Floodlights
Family	The Supermarket Linear System CCT V & PV
Order Code	38100B/W/V
Colour	White
Material	Aluminium
Shape	Rectangular
Length	1144mm
Width	74mm
Height	46mm
Surface Ceiling	Yes
Indoor	Yes
Adjustable	No

Electrical Characteristics

Gear	Built In
Fitting + Driver	
Input Voltage	220-240V
50 Hz	Yes
60 Hz	Yes
Safety Class	
Power(Watts)	23W/28W/34W/40W
IP Rating	IP20
Light Source	LED built in
Dimmable	No
F Mark	


Fitting	
Input Type	Constant Current
Light Source	LED built in

LED Type	
Cable Length	
Gear	
Gear Type	
Input Voltage	
50 Hz	
60 Hz	
Dimmable	

SMD
140cm
Led Driver
220-240V
Yes
Yes
No

Illumination Data

Colour Temperature
Lumen Output
Light Efficiency
CRI
Beam Angle
Illumination Diagram

3000K-4000K-5000K
5200@40W
130lm/W
90
110°


Packing Info

Certification & Warranty

Warranty
Weee Directive

3 Years
Yes

switch to
one light!

