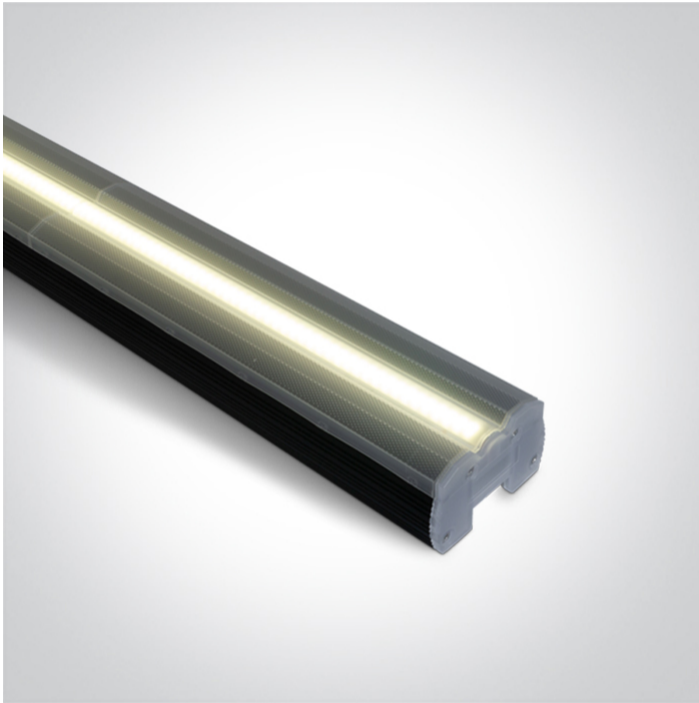


20 Industrial & Floodlights>The Supermarket Linear System CCT V & PV

38100B/B/V



40W LED CCT & Power variable fitting.

Maximum 600W can be connected together.

Complete with 2 pcs fixing clips & plastic connector.

Supplied with non-dimmable LED driver.

Complies with standard EN60598-1 and any other specific standards.



Downloads



Dimensions



Gallery



Accessories



050012





050012A

Physical Specification

Item Group	20 Industrial & Floodlights
Family	The Supermarket Linear System CCT V & PV
Order Code	38100B/B/V
Colour	Black
Material	Aluminium
Shape	Rectangular
Length	1144mm
Width	74mm
Height	46mm
Surface Ceiling	Yes
Indoor	Yes
Adjustable	No

Electrical Characteristics

Gear	Built In
Fitting + Driver	
Input Voltage	220-240V
50 Hz	Yes
60 Hz	Yes
Safety Class	
Power(Watts)	23W/28W/34W/40W
IP Rating	IP20
Light Source	LED built in
Dimmable	No
F Mark	

Fitting	
Input Type	Constant Current
Light Source	LED built in

LED Type

SMD

Cable Length

140cm

Gear

Gear Type

Led Driver

Input Voltage

220-240V

50 Hz

Yes

60 Hz

Yes

Dimmable

No

Illumination Data

Colour Temperature

3000K-4000K-5000K

Lumen Output

5200@40W

Light Efficiency

130lm/W

CRI

90

Beam Angle

110°

Illumination Diagram



Packing Info

Certification & Warranty

Warranty

3 Years

Weee Directive

Yes

switch to
one light!

one
LIGHT

