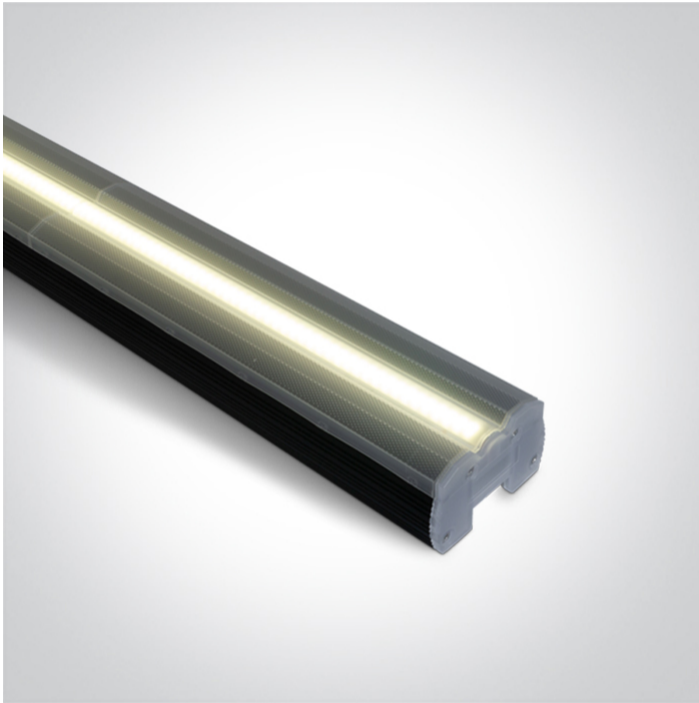


20 Industrial & Floodlights>The Supermarket Linear System CCT V & PV

38100A/B/V



20W LED CCT & Power variable fitting.

Maximum 600W can be connected together.

Complete with 2 pcs fixing clips & plastic connector.

Supplied with non-dimmable LED driver.

Complies with standard EN60598-1 and any other specific standards.



Downloads



Dimensions



Gallery



Accessories



050012





050012A

Physical Specification

Item Group	20 Industrial & Floodlights
Family	The Supermarket Linear System CCT V & PV
Order Code	38100A/B/V
Colour	Black
Material	Aluminium
Shape	Rectangular
Length	576mm
Width	74mm
Height	46mm
Surface Ceiling	Yes
Indoor	Yes
Adjustable	No

Electrical Characteristics

Gear	Built In
Fitting + Driver	
Input Voltage	220-240V
50 Hz	Yes
60 Hz	Yes
Safety Class	
Power(Watts)	12W/14W/17W/20W
IP Rating	IP20
Light Source	LED built in
Dimmable	No
F Mark	

Fitting	
Input Type	Constant Current
Light Source	LED built in

LED Type	SMD
----------	-----

Cable Length	80cm
--------------	------

Gear

Gear Type	Led Driver
-----------	------------

Input Voltage	220-240V
---------------	----------

50 Hz	Yes
-------	-----

60 Hz	Yes
-------	-----

Dimmable	No
----------	----

Illumination Data

Colour Temperature	3000K-4000K-5000K
--------------------	-------------------

Lumen Output	2600@20W
--------------	----------

Light Efficiency	130lm/W
------------------	---------

CRI	90
-----	----

Beam Angle	110°
------------	------

Illumination Diagram	
----------------------	---

Packing Info

Certification & Warranty

Warranty	3 Years
----------	---------

Weee Directive	Yes
----------------	-----

switch to
one light!

one
LIGHT

