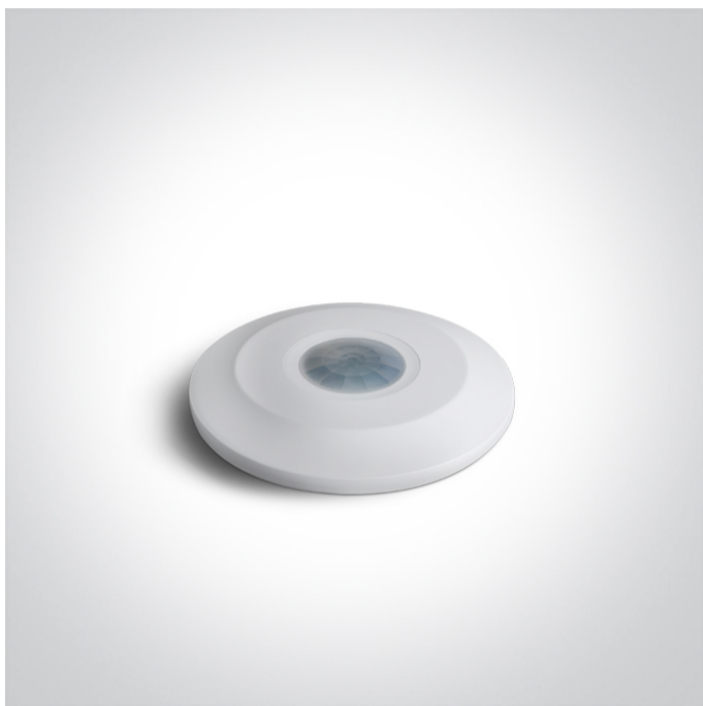


23 Control & Dimming > Ceiling-Mounted Motion Sensors

## 22004P



230V 800W (LED) 1600W (Incandescent) Surface mounted infrared motion & presence sensor.

Time delay, daylight sensor and detection distance are adjustable.

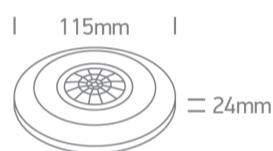
Complies with standard EN60669 and any other specific standards.



Downloads



Dimensions



Physical Specification

Item Group	23 Control & Dimming
Family	Ceiling-Mounted Motion Sensors
Order Code	22004P
Material	PC
Shape	Circular
Height	24mm
Diameter	115mm
Surface Ceiling	Yes
Indoor	Yes

Electrical Characteristics

## Sensor

Input Voltage

220-240V

Power (Watts)

800W (LED) / 1600W (Incandescent)

Safety Class



Motion

Yes

Brightness

Yes

Detection Angle

360°

Detection Distance

6m diameter maximum (adjustable)

Time Delay

10sec ± 3sec to 15min ± 2min (adjustable)

Installation height

2,2-4m

## Packing Info

Pcs/Carton

50

Barcode

5291889088936

HS Code

8536309090

## Certification & Warranty

Warranty

2 years

switch to  
**one light!**

one  
LIGHT

