

INSTALLATION MANUAL

7890

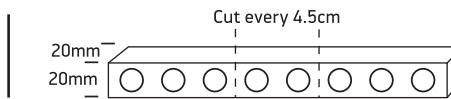
LED
BUILT IN



85
CRI



24V DC | SMD LED | 42LEDs/m | 18W/m | IP65 | Silicone
Requires 24V DC driver.
Supplied in 5m roll.



A. CUT:

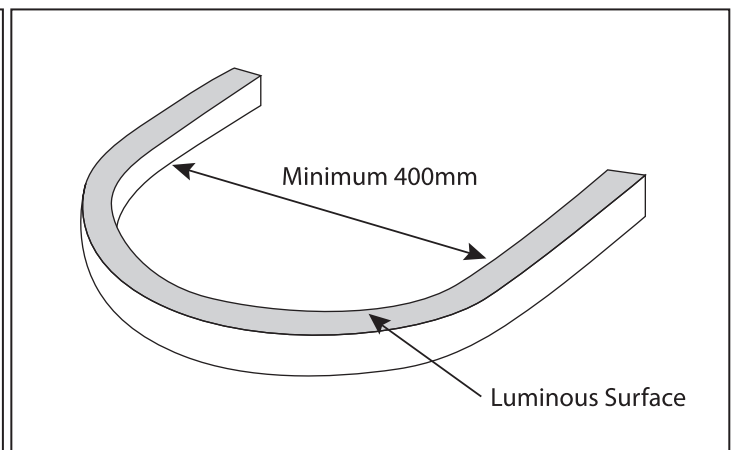
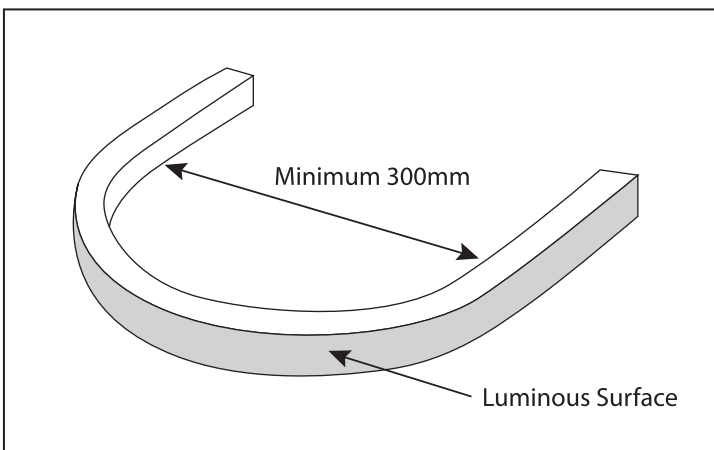
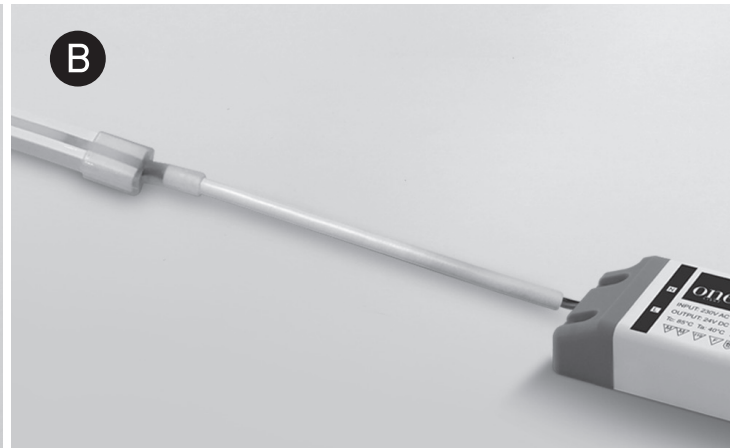
The LED strip can be cut every 4.5cm at the clearly marked positions. Cut carefully at the desired length by using a sharp pair of scissors. You must use an end cap with silicone to seal the cut.

B. CONNECT:

Connect the power supply cable to 24V DC driver.

INSTALLATION:

Use the fixing clips 7890F and or flexible profile 7890FL to install the flexible strip.



Warnings:

1. The mounting surface must be clean, dry and free from dust or grease.
2. Make sure that the product is installed properly before connecting to electricity.
3. Do not bend, fold or twist the LED strip excessively.
4. Do not put excessive pressure on surface of LED strip.
5. Do not cover LED strip with any materials.
6. Do not install in ambient temperatures below -10°C or exceeding 45°C.
7. Always handle the LED strip with care.
8. The LED strip should not be exposed to direct sunlight.
9. LED strips with different batch numbers may have slight variations in colour consistency (CCT±150K).
10. Maintenance and installation should only be carried out by a professional electrician.