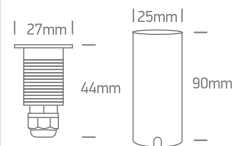
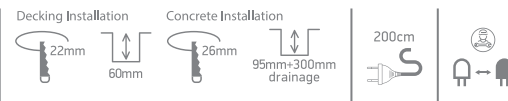


# INSTALLATION MANUAL

69042M

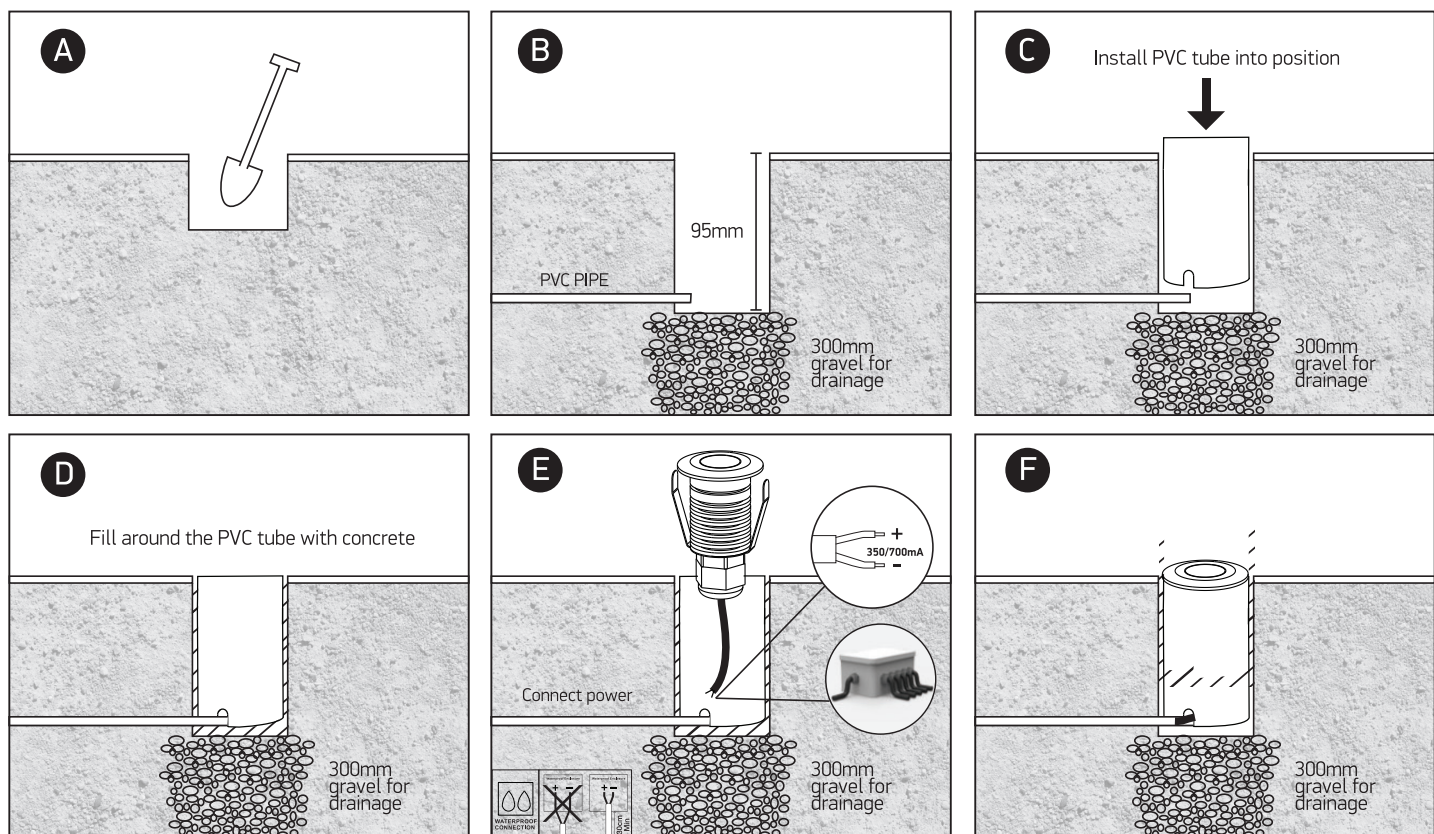


700mA | LED | 2W | IP67 | Aluminium  
Requires 700mA driver.

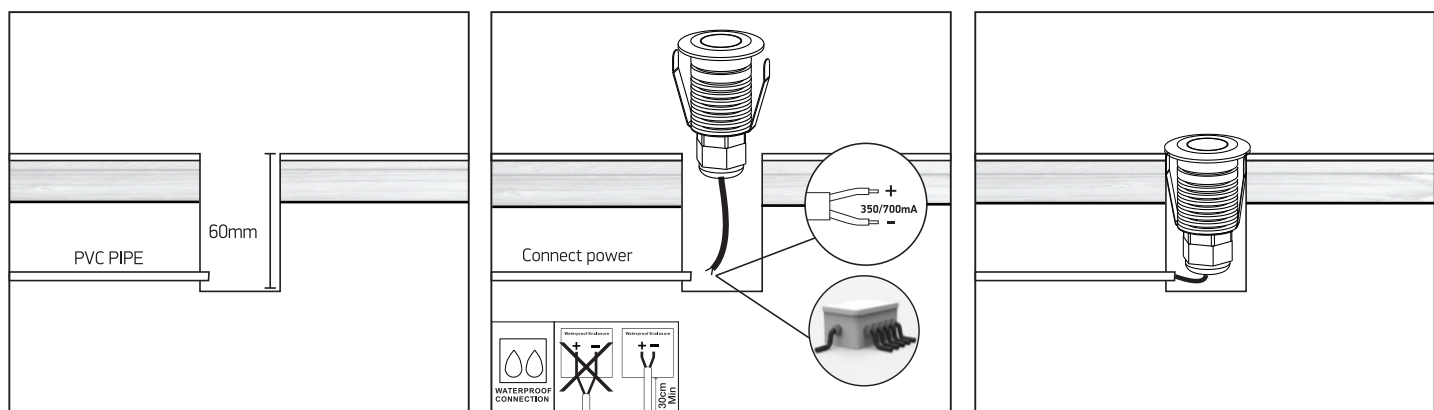


**one**  
LIGHT

## CONCRETE INSTALLATION



## DECKING INSTALLATION



### Warnings:

1. Make sure that the product is installed properly before connecting to electricity.
2. Do not cover the fitting.
3. Maintenance and installation should only be carried out by a professional electrician.