

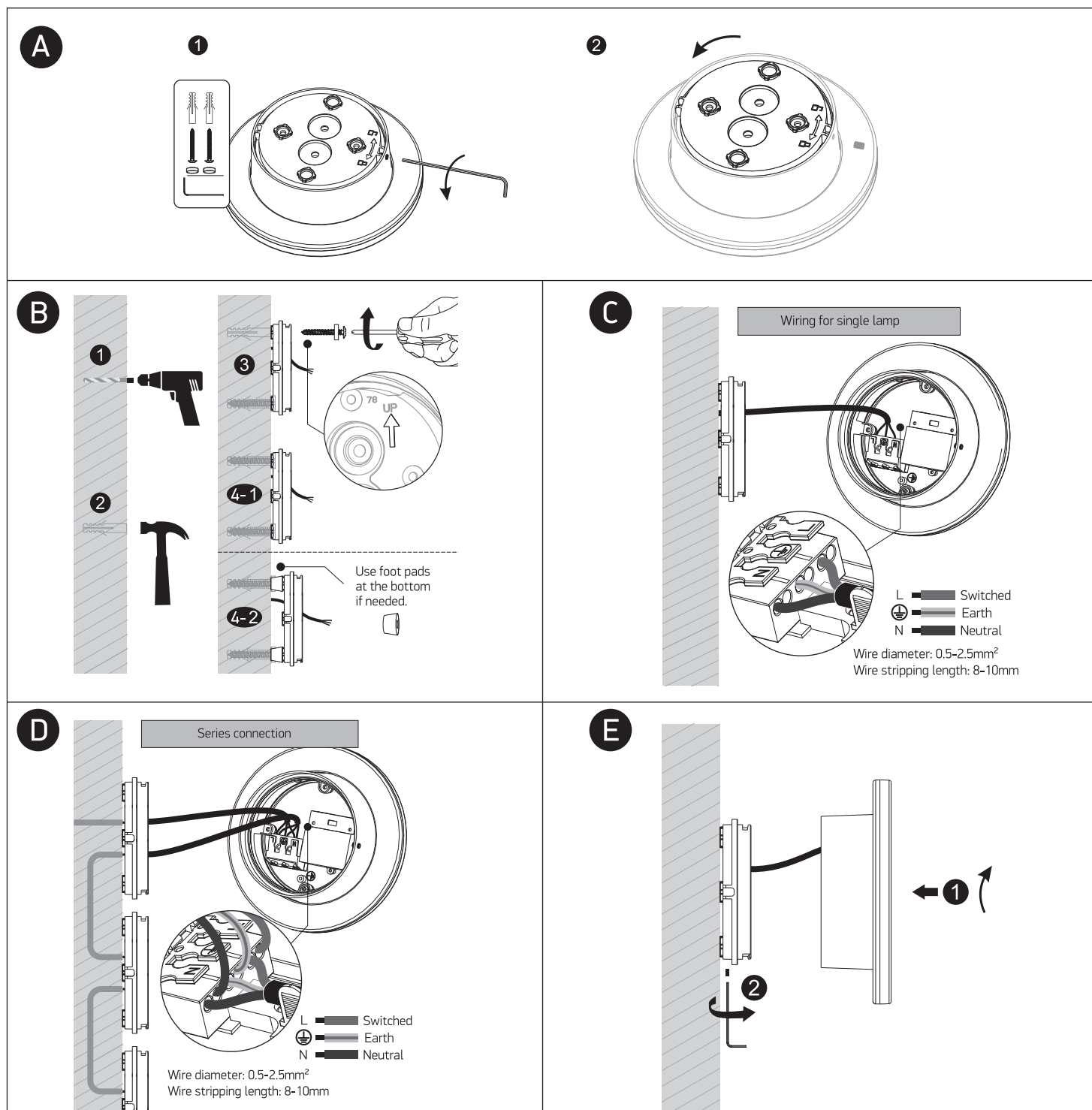
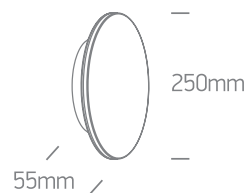
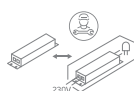
INSTALLATION MANUAL

67532



230V | SMD 2835 | 15W | IP65 | Dimmable | Aluminium + PC
Complete with 190mA dimmable driver.

80
CRI



Warnings:

1. Make sure that the product is installed properly before connecting to electricity.
2. Do not cover the fitting.
3. Maintenance and installation should only be carried out by a professional electrician.