

# INSTALLATION MANUAL

6312D & 6312L

LED  
BUILT IN



DC  
MOTOR

25W  
MOTOR

6  
SPEED

WINTER  
REVERSE MOTOR

REMOTE  
CONTROL

LIGHT  
ON/OFF  
SWITCH

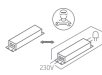
22W  
LED

2000  
LUMEN

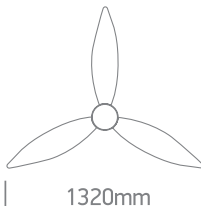
230V | LED 22W | DC MOTOR 25W | IP20 | Metal body | Wood blades | Rod mounted

· Maximum air flow rate 85m<sup>3</sup>/min  
· Service value 3,4/W  
· Standby power consumption 0,5W

· Fan sound power level 45dB(A)  
· Maximum air velocity 2,3 m/sec.  
· Max RPM 185

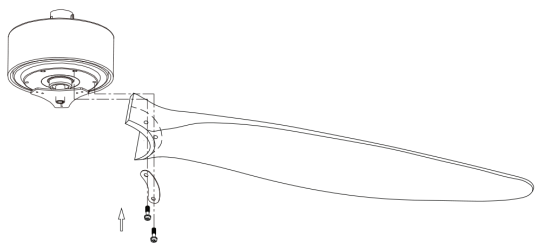


350mm  
(with 150mm Rod)



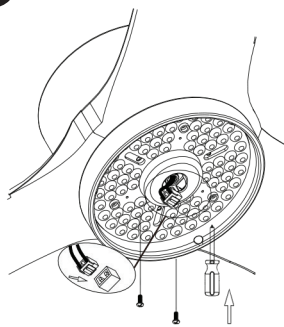
one  
LIGHT

1



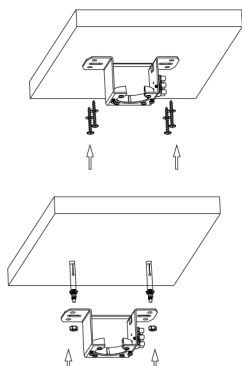
Install the fan blades and tighten screws.

2



Install LED plate and connect cable.

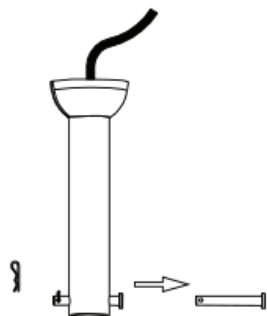
3



3a

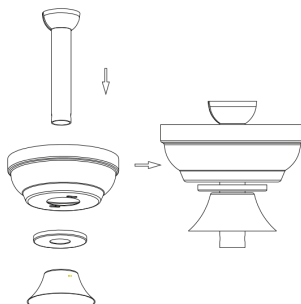
Install ceiling bracket.

4



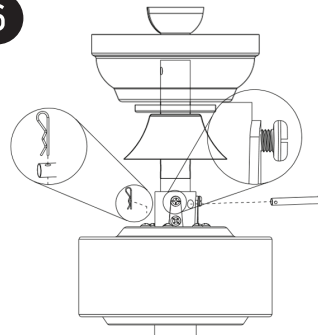
Remove the R clip from the pin. Then remove the pin from the rod.

5



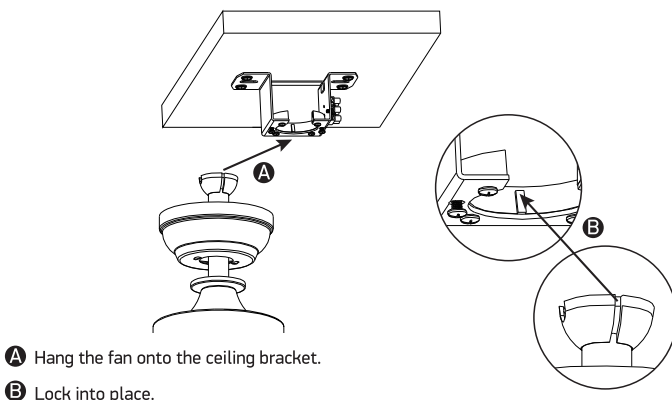
- A Place the parts on the rod.  
B Pass wires through rod.

6



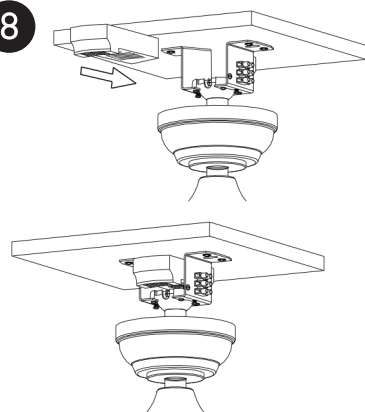
- A Put the rod into the motor and install the pin and R clip.  
B Tighten all the nuts and screws.

7



- A Hang the fan onto the ceiling bracket.  
B Lock into place.

8



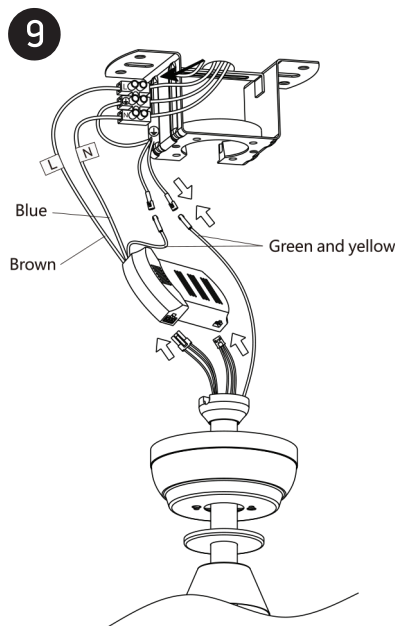
Place the receiver on the hanger bracket.

## Warnings:

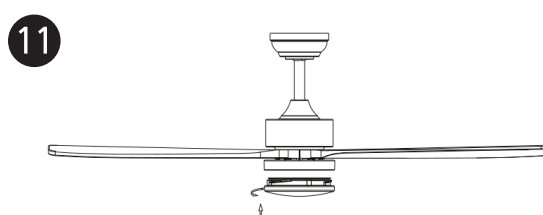
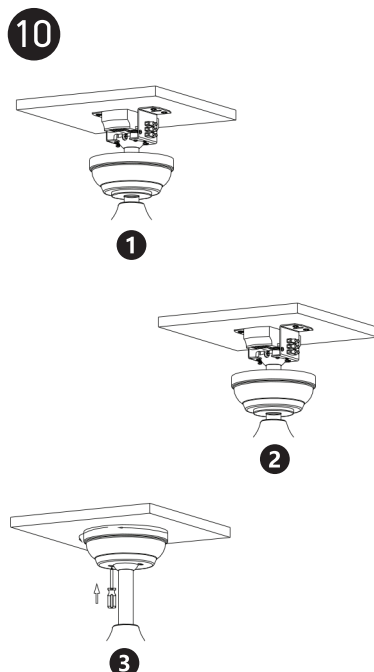
1. Make sure that the product is installed properly before connecting to electricity.
2. Maintenance and installation should only be carried out by a professional electrician.

[www.1-light.eu](http://www.1-light.eu)

## 6312D & 6312L

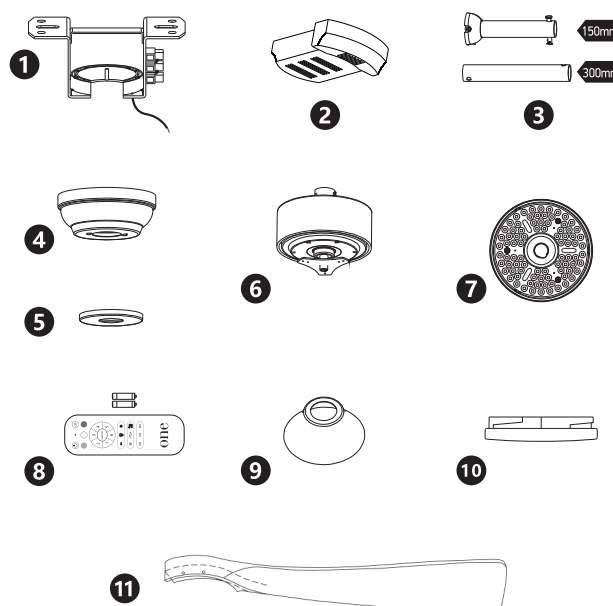


### Connect wires.



Install the diffuser onto the LED plate.

## PACKAGE CONTENTS

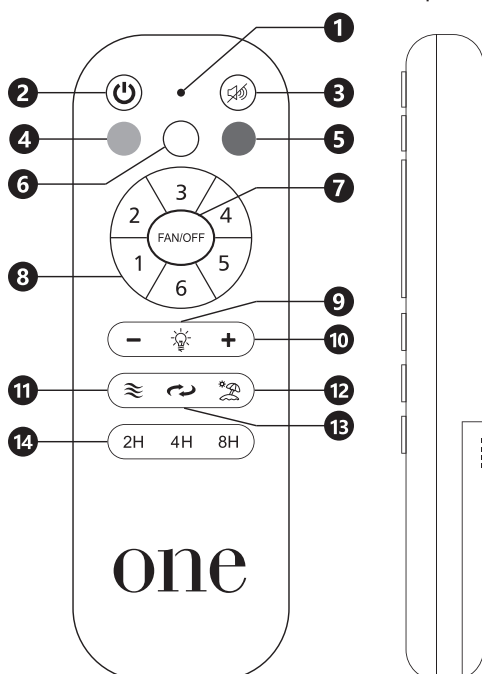


- 1 Hanger bracket
- 2 Receiver
- 3 Rod assembly
- 4 Canopy
- 5 Canopy cover
- 6 Motor
- 7 22W LED
- 8 Remote control + holder  
+2 mounting screws  
+1.5V (AAA)x2 batteries
- 9 Cover
- 10 Diffuser
- 11 Fan blades (3pcs)
- A Screws for blades
- B Mounting hardware
- C Blade balancing kit

## REMOTE CONTROL

Requires 2xAAA batteries. Remove batteries if not used for long period of time.

- ① LED indicator
- ② ON/OFF
- ③ Mute sound
- ④ Warm white LED
- ⑤ Cool white LED
- ⑥ Daylight LED
- ⑦ Fan OFF
- ⑧ Fan speeds: To turn fan ON 1(lowest) to 6 (highest)
- ⑨ LED light ON / OFF
- ⑩ LED dimmer
- ⑪ Breeze: Fan speeds automatic cycle between 1 to 6
- ⑫ Vacation mode: Switch on the light kit  
5 minutes each 2 hours
- ⑬ Reverse function for winter and summer
- ⑭ Timer: Fan stops after 2h/4h/8h



**NOTE:** To pair a remote to a receiver turn **ON** the power supply to the fan and press the **ON/OFF** and **MUTE** keys on the remote for 3 to 5 seconds. You will hear a beep.

**NOTE:** When switching mains ON, light automatically turns on.

### Warnings:

1. Make sure that the product is installed properly before connecting to electricity.
2. Maintenance and installation should only be carried out by a professional electrician.