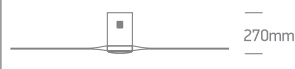


INSTALLATION MANUAL

6302C

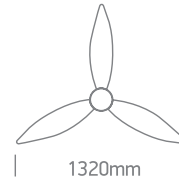
LED
BUILT IN



DC 35W MOTOR **6** SPEED WINTER REVERSE MOTOR REMOTE CONTROL LIGHT ON/OFF SWITCH **22W** LED **2000** LUMEN

230V | LED 22W | DC MOTOR 35W | IP20 | Metal body | ABS blades | Ceiling mounted

- Maximum air flow rate 100m³/min
- Service value 2,8/W
- Standby power consumption 0,5W
- Fan sound power level 45dB(A)
- Maximum air velocity 2,6 m/sec.
- Max RPM 215



one
LIGHT

<p>1</p> <p>Install the fan blades and tighten screws.</p>	<p>2</p> <p>Install LED plate and connect cable.</p>	<p>3</p> <p>Install the diffuser onto the LED plate.</p>
<p>4</p> <p>Install ceiling bracket.</p>	<p>5</p>	
<p>6</p> <p>Connect wires.</p>	<p>7</p>	<p>8</p>

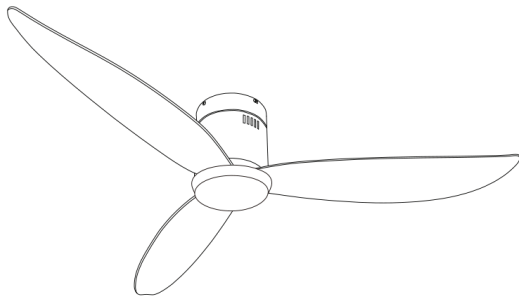
Warnings:

1. Make sure that the product is installed properly before connecting to electricity.
2. Maintenance and installation should only be carried out by a professional electrician.

INSTALLATION MANUAL

6302C

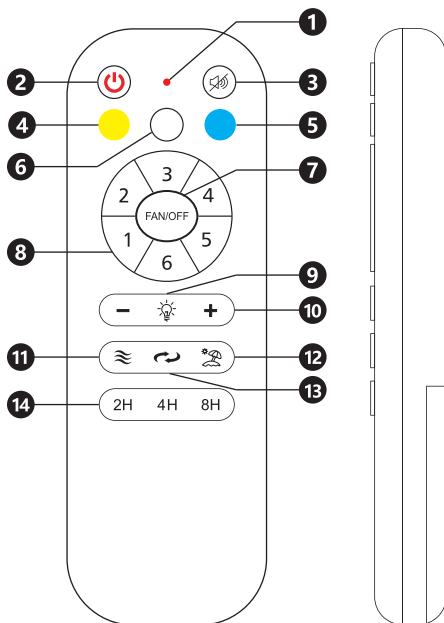
9



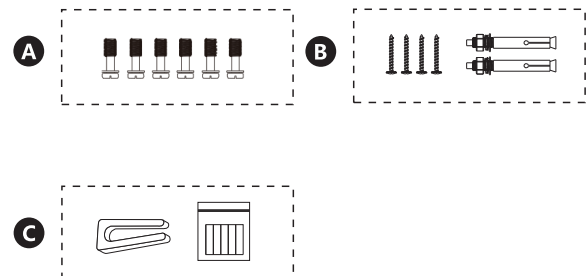
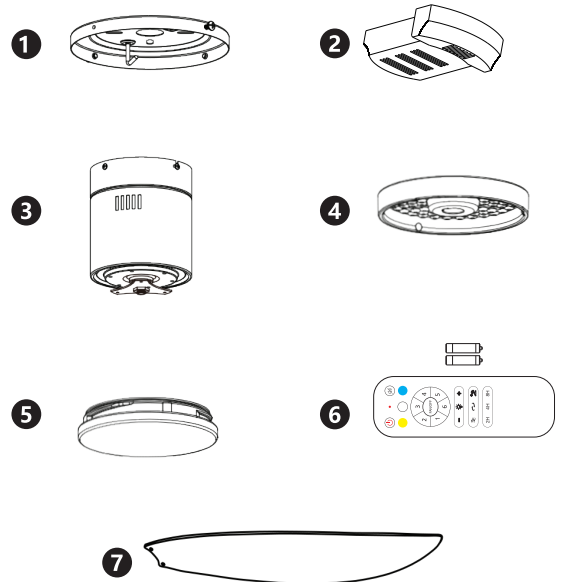
REMOTE CONTROL

Requires 2xAAA batteries. Remove batteries if not used for long period of time.

- 1 LED indicator
- 2 ON/OFF
- 3 Mute sound
- 4 Warm white LED
- 5 Cool white LED
- 6 Daylight LED
- 7 Fan OFF
- 8 Fan speeds: To turn fan ON 1(lowest) to 6 (highest)
- 9 LED light ON / OFF
- 10 LED dimmer
- 11 Breeze: Fan speeds automatic cycle between 1 to 6
- 12 Vacation mode: Switch on the light kit
5 minutes each 2 hours
- 13 Reverse function for winter and summer
- 14 Timer: Fan stops after 2h/4h/8h



PACKAGE CONTENTS



- 1 Mounting bracket
- 2 Receiver
- 3 Motor
- 4 22W LED
- 5 Diffuser
- 6 Remote control + holder
+2 mounting screws
+1.5V (AAA)x2 batteries
- 7 Fan blades (3pcs)
- A Screws for blades
- B Mounting hardware
- C Blade balancing kit

NOTE: When switching mains ON, light automatically turns on.

Warnings:

- 1. Make sure that the product is installed properly before connecting to electricity.
- 2. Maintenance and installation should only be carried out by a professional electrician.