

INSTALLATION MANUAL

62156C

LED
BUILT IN



80
CRI

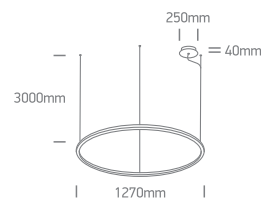
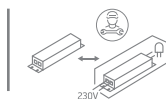
CE ENEC

UK

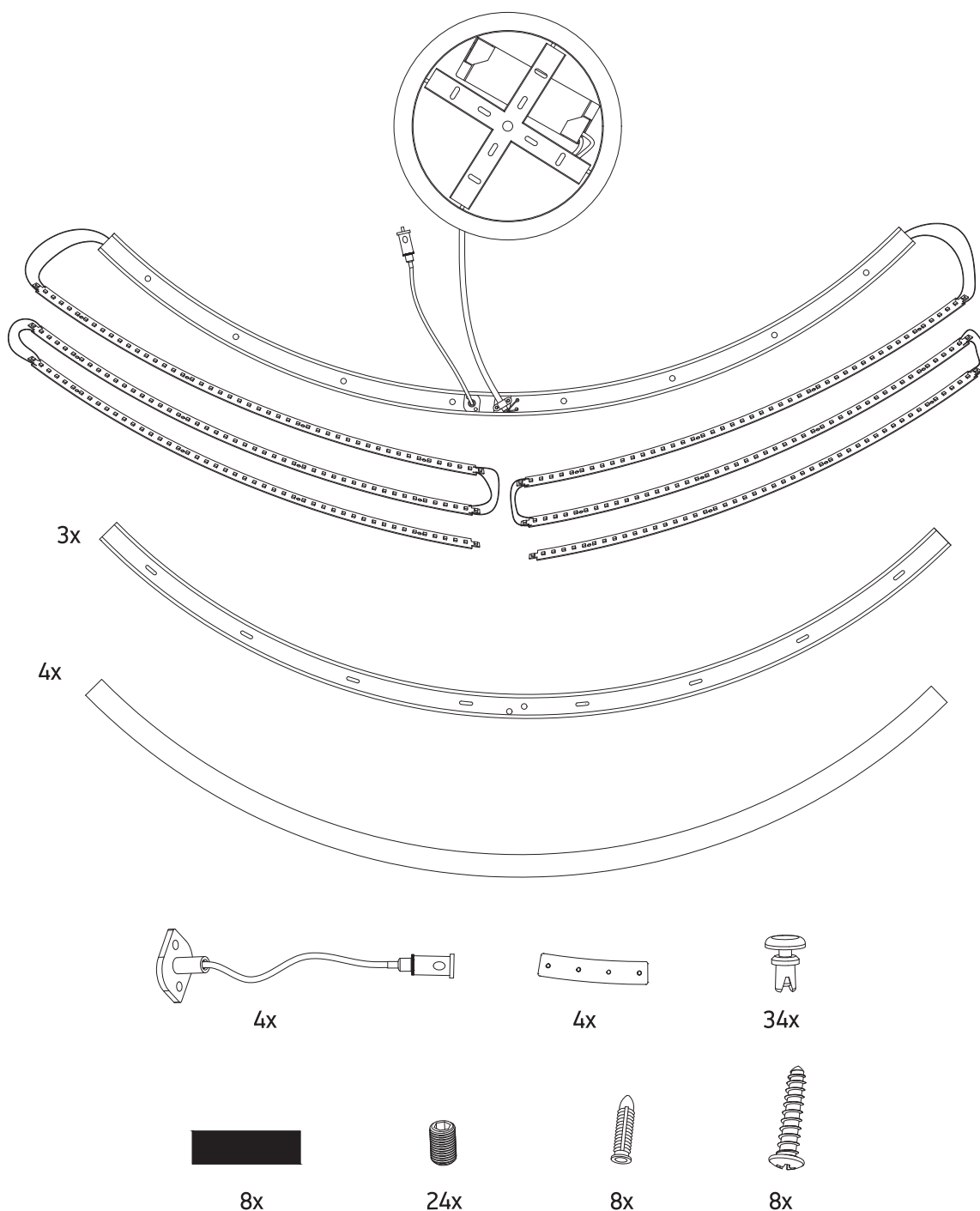
RoHS
COMPLIANT



230V | SMD | 65W | IP20 | Aluminium
Complete with 1600mA driver.

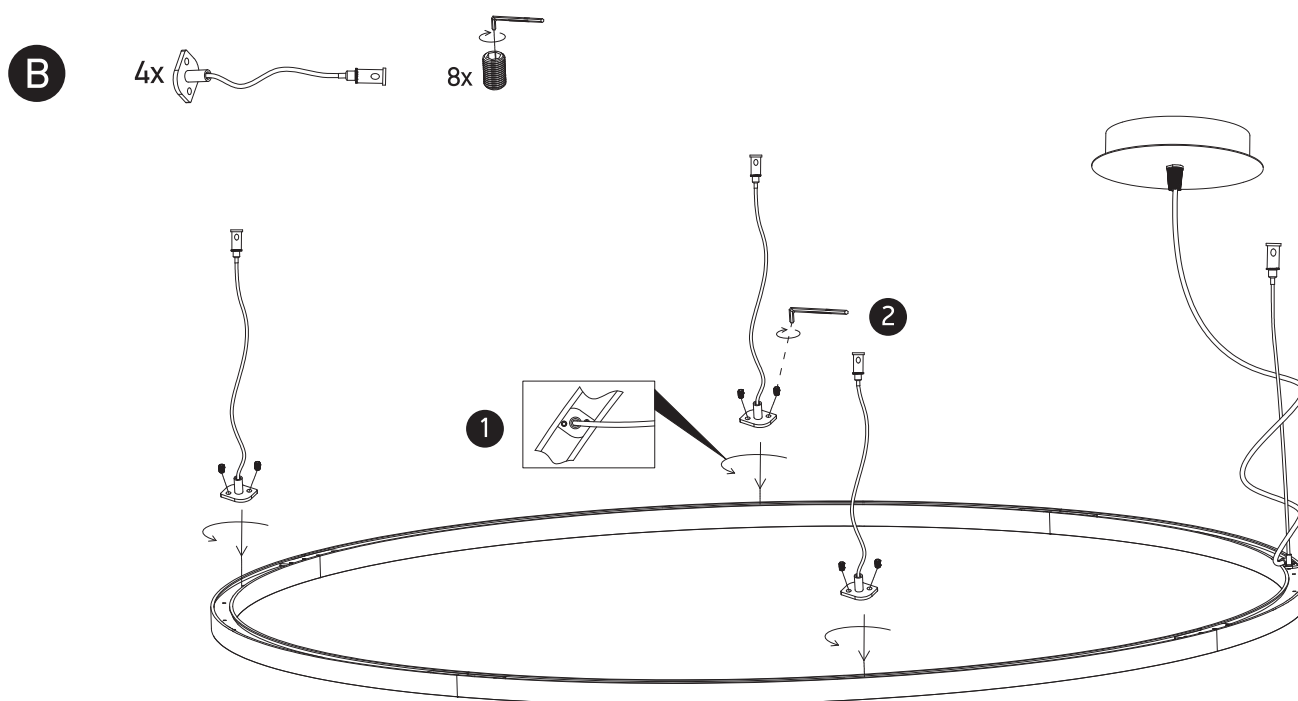
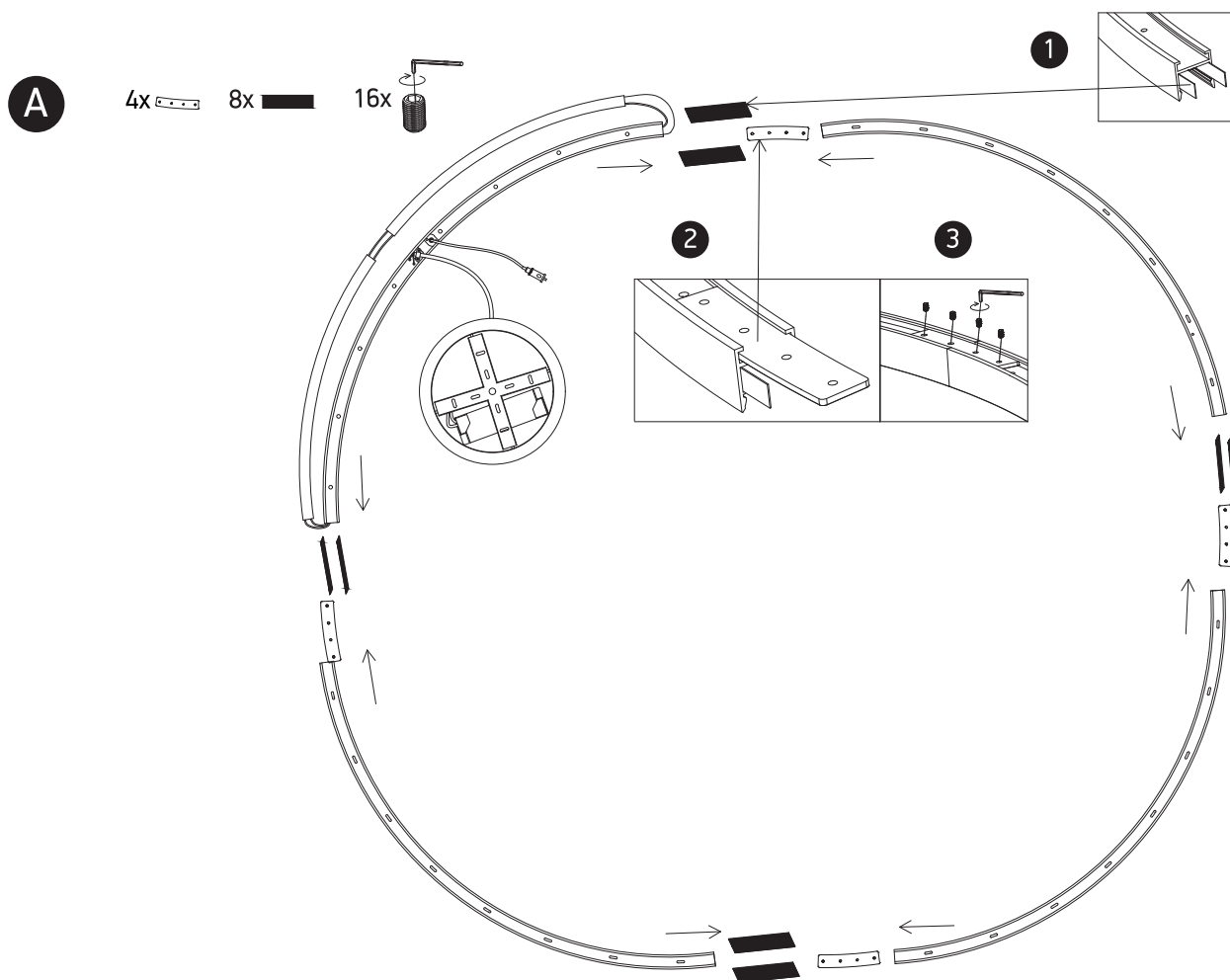


one
LIGHT



Warnings:

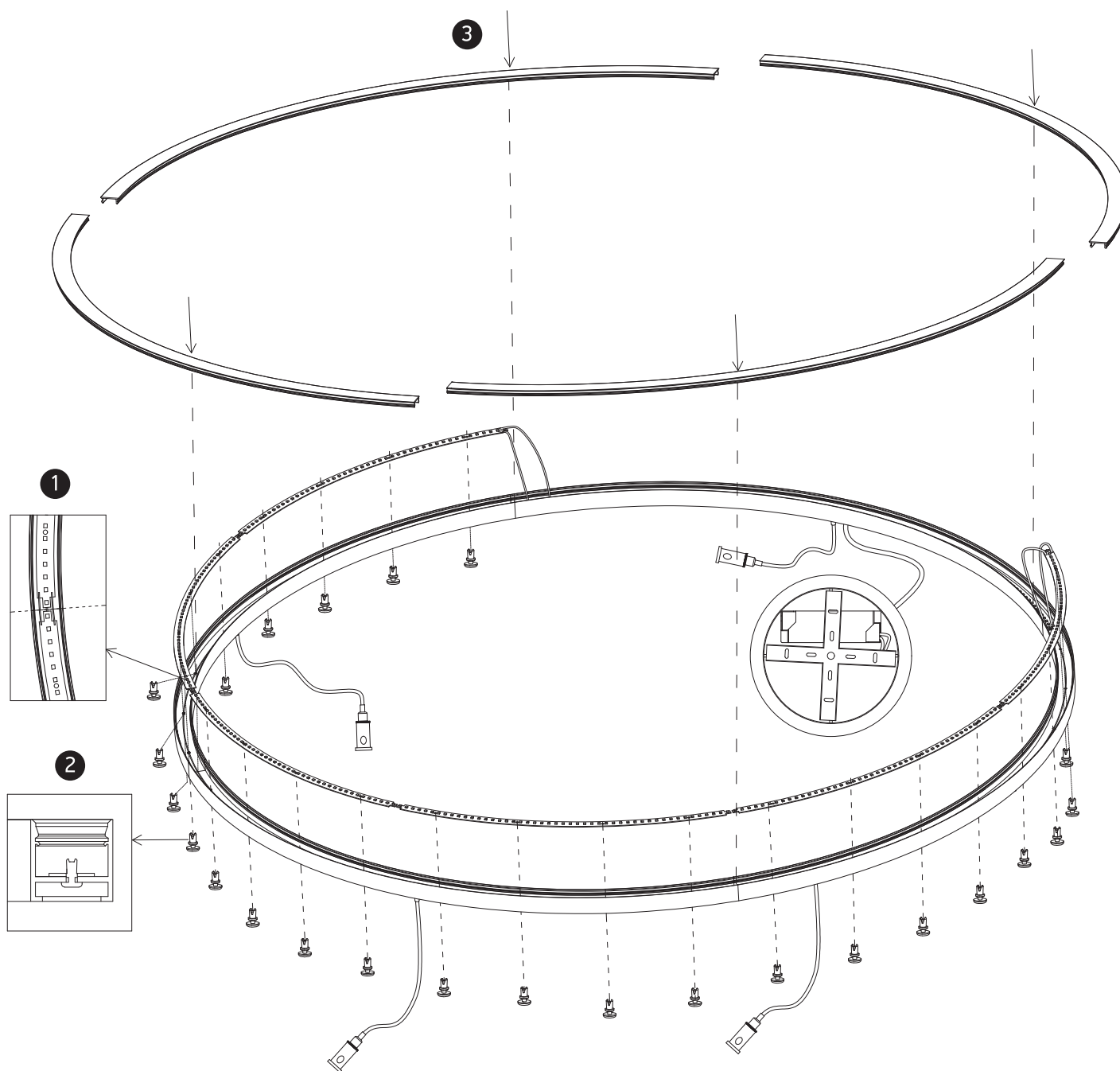
1. Fix the base on the ceiling.
2. Make sure that the product is installed properly before connecting to electricity.
3. Connect the AC power cable to the driver's cable as shown in the above diagram.
4. Do not cover the fitting.
5. Maintenance and installation should only be carried out by a professional electrician.



C

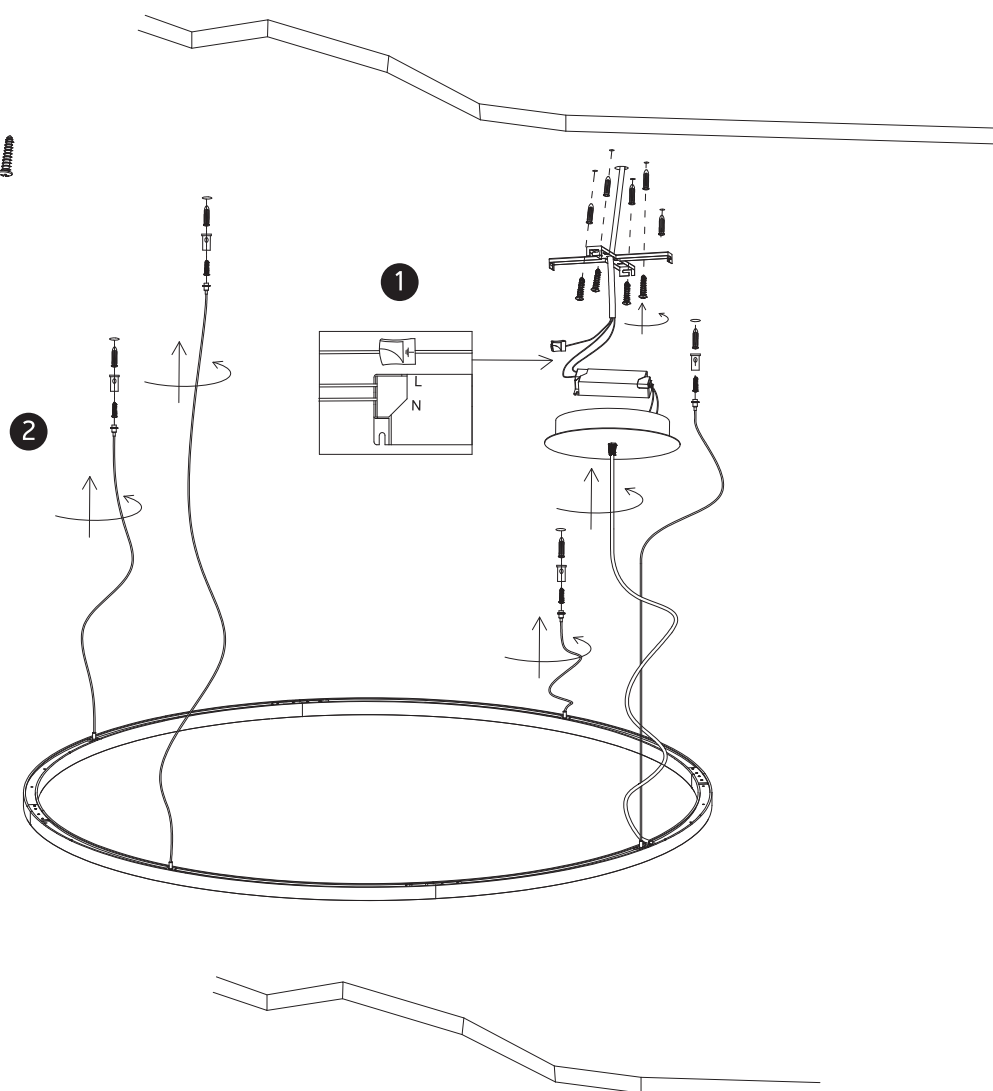
34x 

4x



D

8x  8x 



E

