

INSTALLATION MANUAL

38150BU/./V

LED
BUILT IN



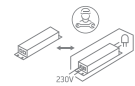
UGR17



90
CRI



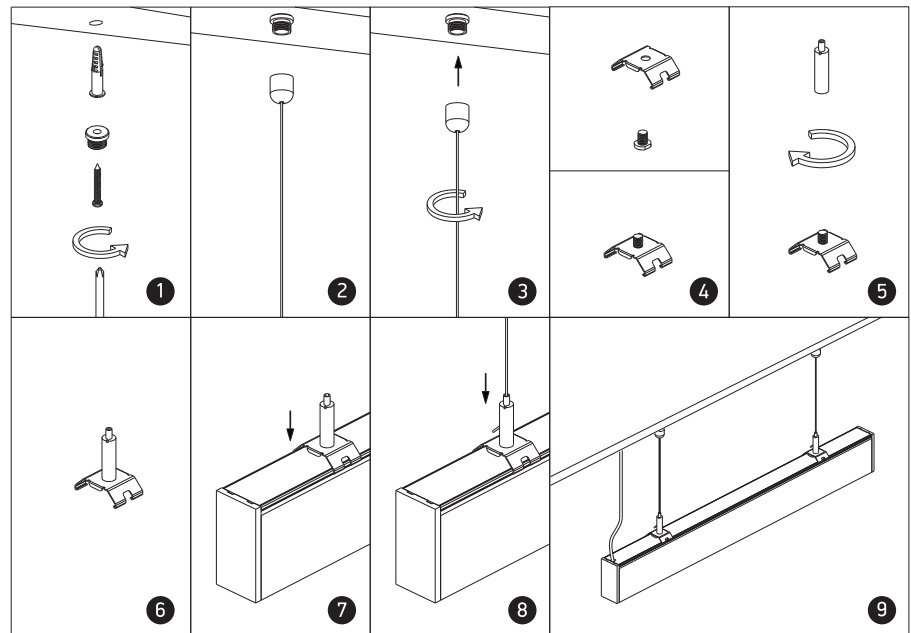
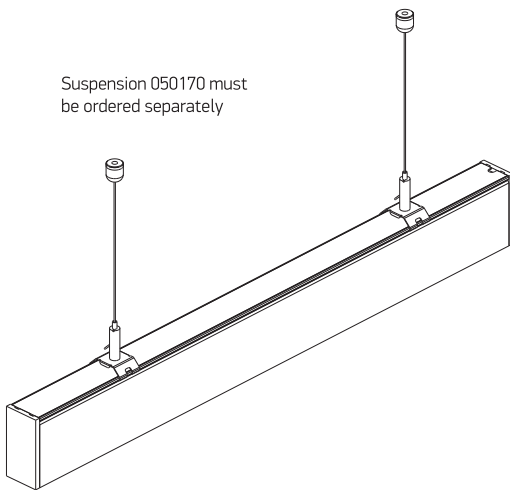
230V | SMD | 48LEDs + Diffuser | CCT V
40W PV + 22W PV Uplight | Linear system | Aluminium
Complete with PV driver. / Can be connected in line.



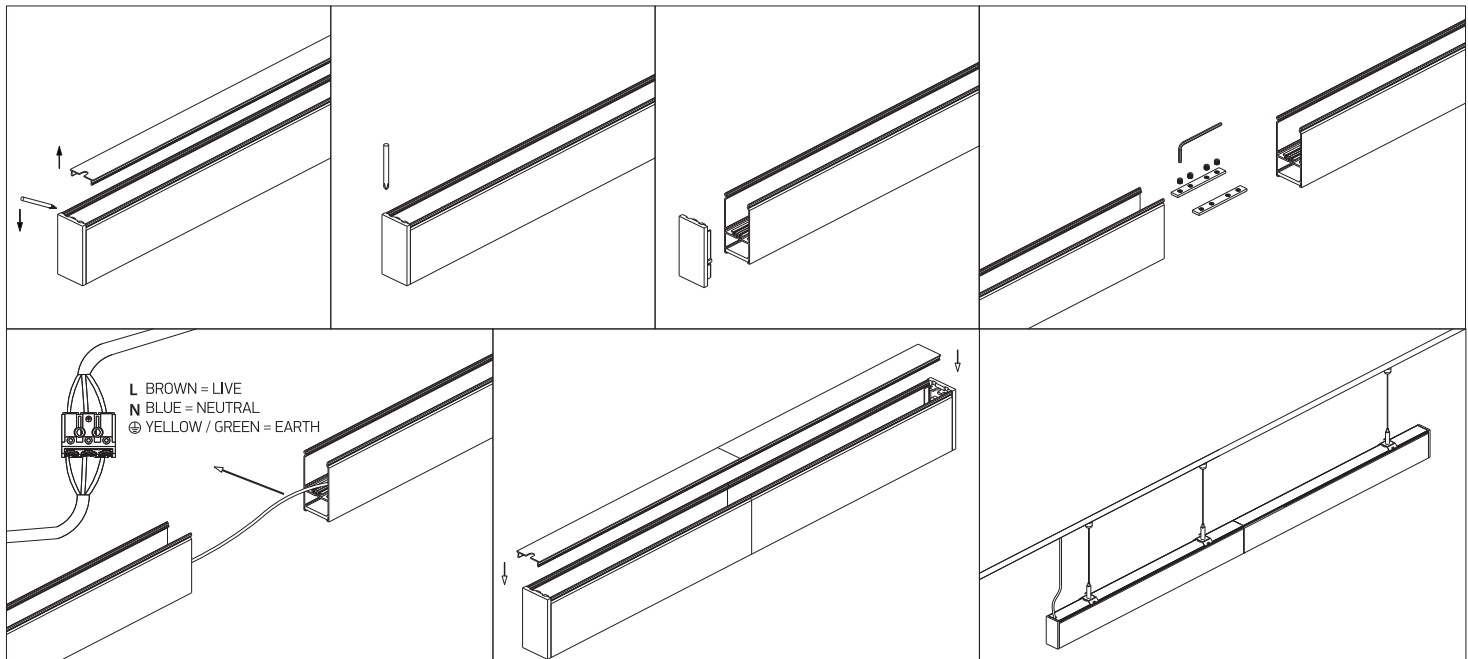
one
LIGHT

A INSTALLATION

Suspension 050170 must
be ordered separately



B CONNECTION



L BROWN = LIVE
N BLUE = NEUTRAL
⊕ YELLOW / GREEN = EARTH

Warnings:

1. Make sure that the product is installed properly before connecting to electricity.
2. Do not cover the fitting.
3. Maintenance and installation should only be carried out by a professional electrician.