

INSTALLATION MANUAL

38145AR/./V

LED
BUILT IN



UGR19

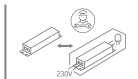


90
CRI

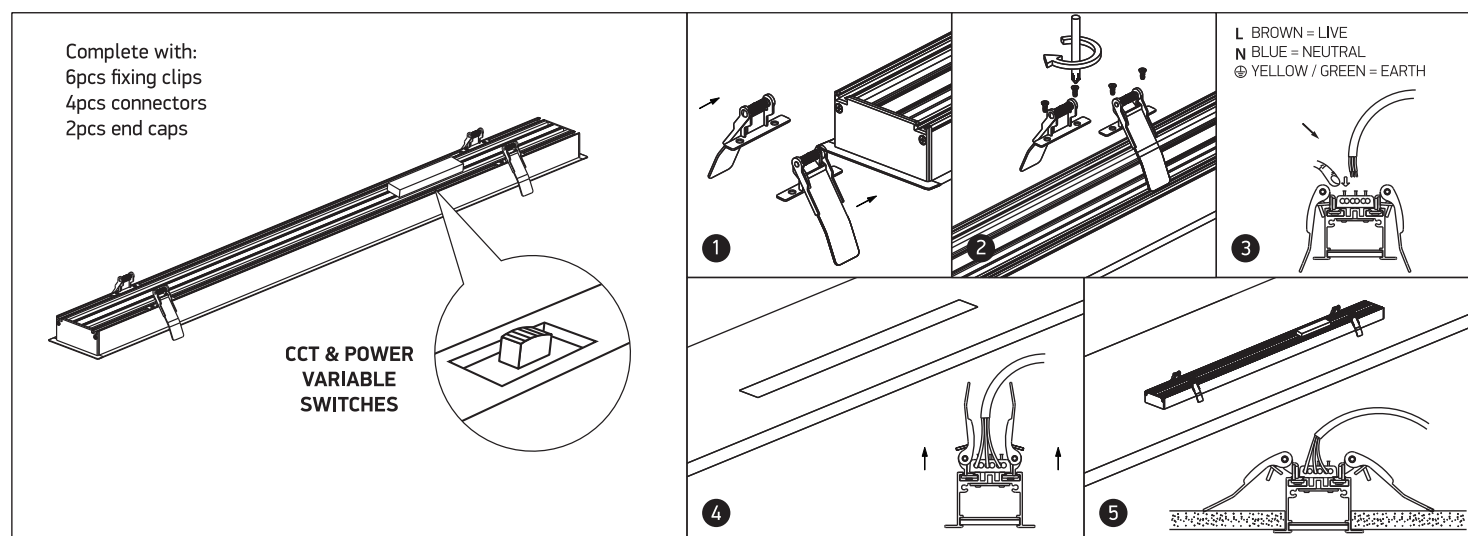
CE EAC UK CA



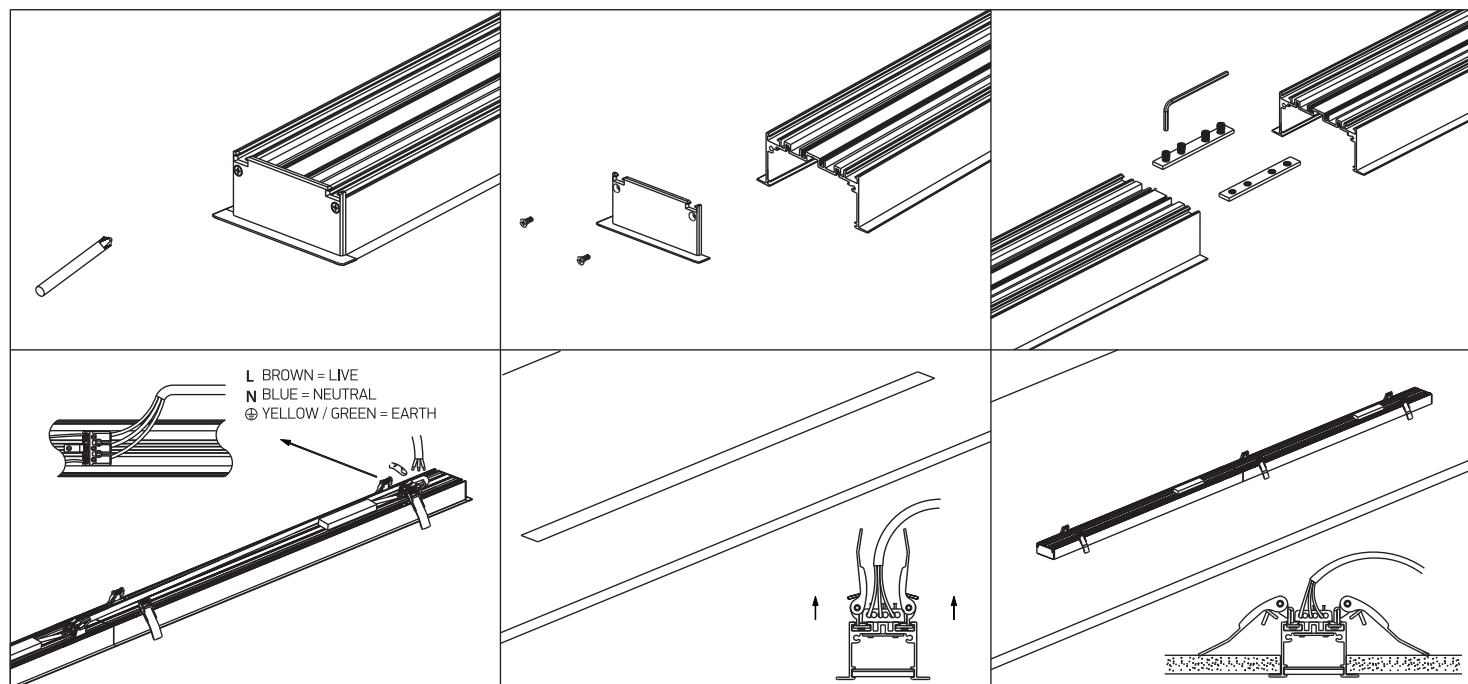
230V | SMD | CCT V | 40W PV | IP20
Recessed linear system | Aluminium
Complete with PV driver. / Can be connected in line.



A INSTALLATION



B CONNECTION



Warnings:

1. Make sure that the product is installed properly before connecting to electricity.
2. Do not cover the fitting.
3. Maintenance and installation should only be carried out by a professional electrician.

www.1-light.eu